

1954 New Year's Day

# Cotton Bowl



**ALABAMA vs. RICE**



# YOU AND YOUR BANK HAVE A MUTUAL GOAL . . .

To jointly build a greater Dallas — a community of friendly neighbors, helping and respecting each other, whether it be in our social life or business dealings.

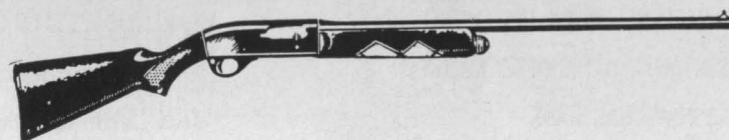
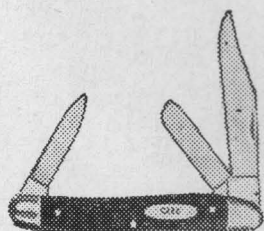
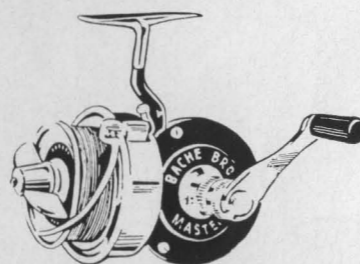
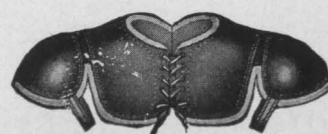
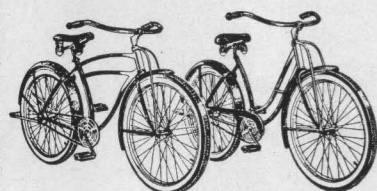
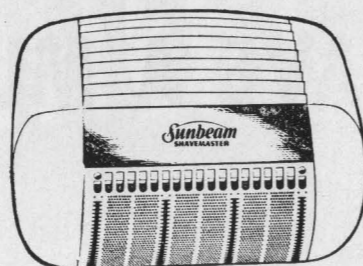
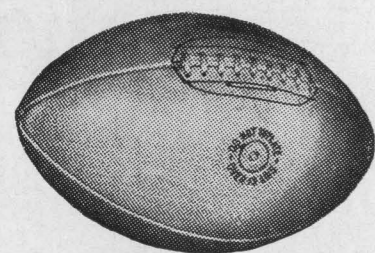
We thank you for your friendship in the past. We look forward to an even closer relationship and understanding in 1954 and the years to follow.

## DALLAS CLEARING HOUSE ASSOCIATION

*Composed of the following banks:*

- |                                    |                                     |
|------------------------------------|-------------------------------------|
| FIRST NATIONAL BANK IN DALLAS      | LAKEWOOD STATE BANK OF DALLAS       |
| THE NATIONAL BANK OF COMMERCE      | EMPIRE STATE BANK OF DALLAS         |
| DALLAS NATIONAL BANK               | OAK LAWN NATIONAL BANK OF DALLAS    |
| MERCANTILE NATIONAL BANK AT DALLAS | MERCHANTS STATE BANK                |
| REPUBLIC NATIONAL BANK OF DALLAS   | GREENVILLE AVENUE STATE BANK        |
| NATIONAL CITY BANK OF DALLAS       | FAIR PARK NATIONAL BANK OF DALLAS   |
| TEXAS BANK & TRUST CO. OF DALLAS   | HIGHLAND PARK STATE BANK            |
| GRAND AVENUE STATE BANK            | AMERICAN NATIONAL BANK OF OAK CLIFF |
| THE HILLCREST STATE BANK           | GROVE STATE BANK                    |
| OAK CLIFF BANK & TRUST COMPANY     | WYNNEWOOD STATE BANK                |
| CITY STATE BANK OF DALLAS          |                                     |

Members Federal Deposit Insurance Corporation



**You Get All These** *(and more too!)*

AT

**CULLUM & BOREN**

1509 ELM

DALLAS

# The Cotton Bowl Athletic Association

presents its

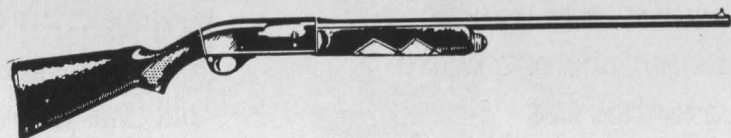
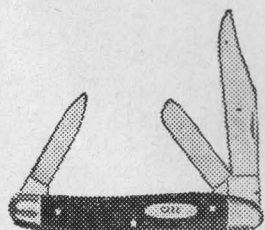
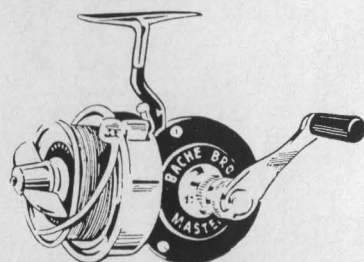
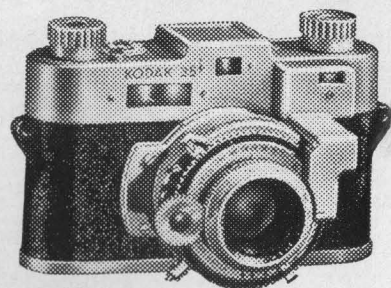
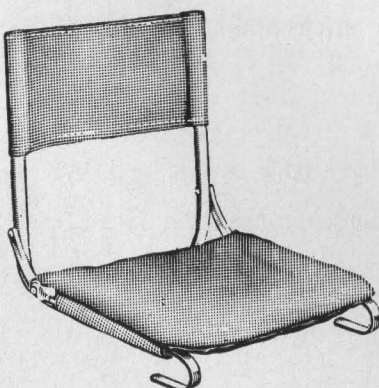
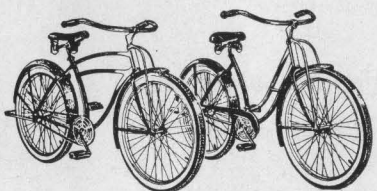
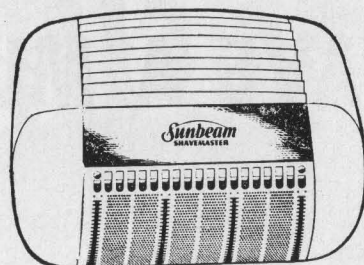
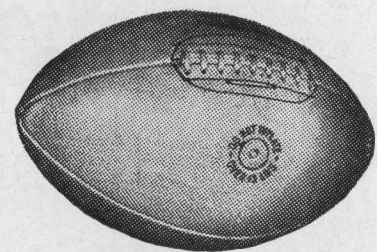
**18<sup>th</sup>**

## ANNUAL CLASSIC

UNIVERSITY OF  
**ALABAMA**  
**VS**  
**RICE**  
INSTITUTE



JANUARY 1, 1954 ★ DALLAS, TEXAS



**You Get All These** *(and more too!)*

AT

**CULLUM & BOREN**

1509 ELM

DALLAS

The  
**Cotton Bowl Athletic Association**  
presents its

**18<sup>th</sup>**

**ANNUAL CLASSIC**

UNIVERSITY OF  
**ALABAMA**  
**VS**  
**RICE**  
INSTITUTE



JANUARY 1, 1954 ★ DALLAS, TEXAS

**A** season of exciting intercollegiate football comes to a spectacular climax with the meeting of these two champions in the Cotton Bowl Classic of 1954.

# The OWLS of RICE INSTITUTE

HOUSTON, TEXAS

and

# The CRIMSON TIDE of UNIVERSITY of ALABAMA

TUSCALOOSA, ALABAMA



DALLAS AGENCY

P. H. Huffstetler, Manager

1504 Kirby Building

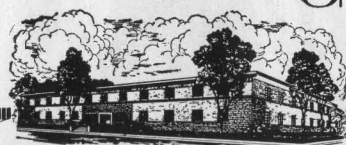
Telephone: PROspect 8931

## REPRESENTATIVES

D. C. Chancey, Jr.  
John F. Duke, Jr.  
Hal A. Gullledge  
Walter C. Hodges  
Jerry J. Joyce  
F. Robert Landrum  
James M. Lasater

Harlin Morrison, Jr.  
James F. Patrick  
Fred R. Patton  
Johnny S. Sierra  
George G. Wells  
Don P. Woody

GREAT SOUTHERN  
Life Insurance Company



4310 Dunlavy • Houston 6, Texas

# COTTON BOWL ATHLETIC ASSOCIATION, INC.

\* \* \* \* \*

## OFFICERS

LEONARD GREEN, Chairman of the Board      OTTO H. EISENLOHR, President  
FELIX McKNIGHT, First Vice President      ROBERT B. CULLUM, Second Vice President  
HOWARD GRUBBS, Secretary-Treasurer

## STAFF

JOSEPH B. RUCKER, JR., Director of Special Events  
FRANK H. MALONE, JR., Director of Pageantry  
CHARLES BLALACK, Director of Publicity

## COMMITTEES FOR 1954 CLASSIC

EXECUTIVE COMMITTEE: Leonard Green, Chairman of the Board; Otto H. Eisenlohr, President; Howard Grubbs, Secretary-Treasurer; E. Cowden Henry, Representing Baylor; Tyree L. Bell, Representing A&M; Jack Lowe, Representing Rice; Ben Wooten, Representing Arkansas; Jordan C. Ownby, Representing SMU; J. C. Thompson, Representing Texas; L. C. Wright, Representing TCU; J. Curtis Sanford, Custodial Director; Jake L. Hamon, Custodial Director.

SPECIAL GUEST COMMITTEE: Robert L. Clark, Alvin Lane, Co-Chairmen; Fred Florence and Jake L. Hamon.

HOUSING COMMITTEE: William R. Moore, Chairman; G. C. French, Fenton Baker, Z. E. Black, J. E. Williams, Randall Davis, Royal C. Miller, Connie Sherman, Helen McGibney.

PRESS RECEPTION COMMITTEE: Felix McKnight, Chairman; Frank Langston, Robert B. Cullum, Jordan M. Ownby, Charles Blalack.

TEAM SELECTION COMMITTEE: Leonard Green, Chairman; James H. Stewart, Howard Grubbs, Otto H. Eisenlohr, Felix McKnight.

STUDENT PARTICIPATION COMMITTEE: Jack Lowe, Chairman; Curtis Horn, Edwin Jordan, Harwood K. Smith, Melvin T. Munn, Joseph B. Rucker, Jr., Bill Brice, Frank H. Malone, Jr., W. M. Longnecker, Ray Woods.

AWARDS COMMITTEE: Jordan M. Ownby, Chairman; Howard Grubbs, Felix McKnight.

CONCESSIONS COMMITTEE: Joe Utay, Chairman; E. Cowden Henry, Barton V. Anderson, Herbert D. Brin, J. B. Crockett.

PROGRAM COMMITTEE: Robert B. Cullum, Chairman; E. Cowden Henry, Paul Middleton, William R. Moore, Jack Harding, Carroll M. Bennett, Charles Blalack.

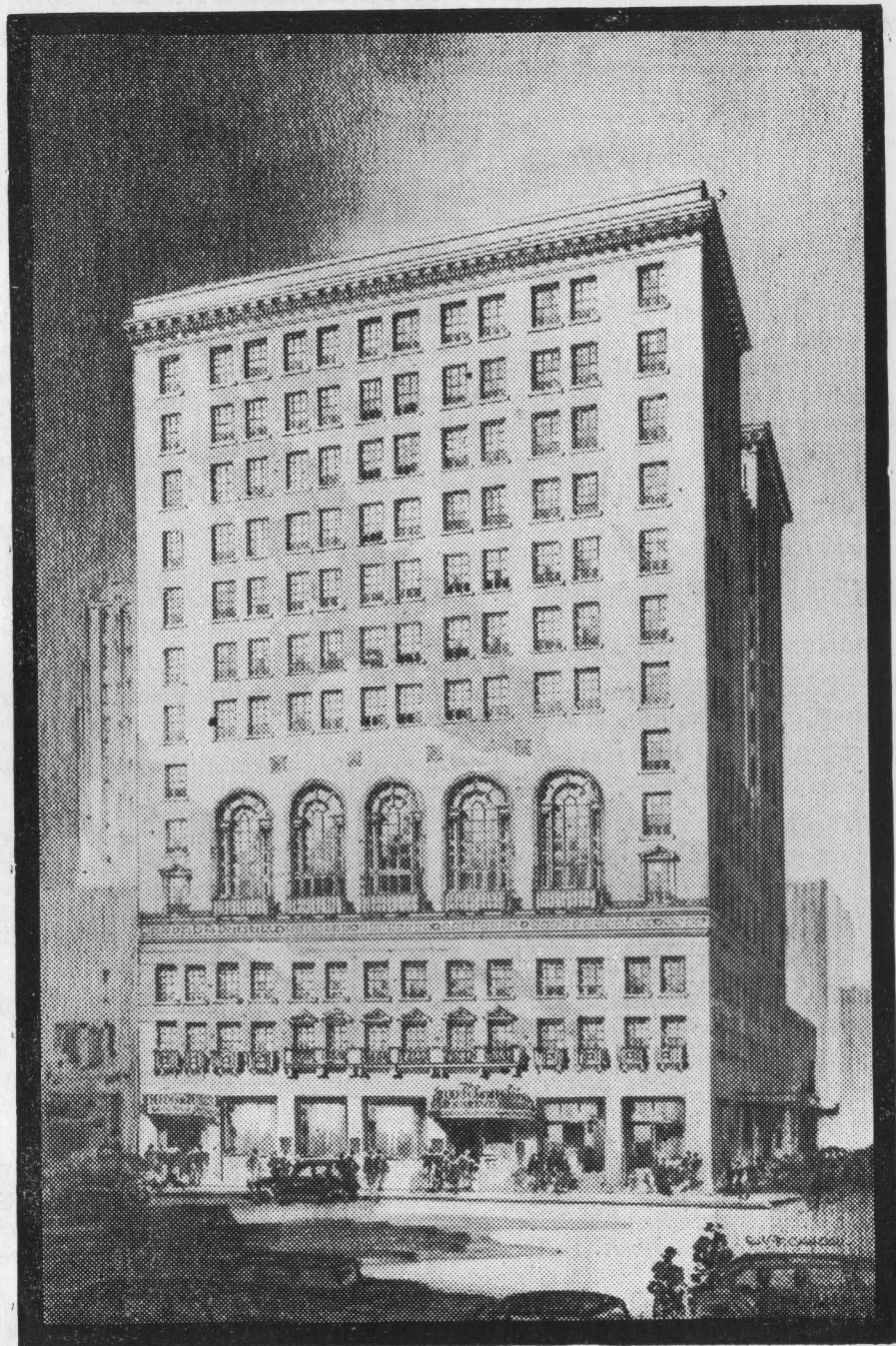
GENERAL ENTERTAINMENT COMMITTEE: Tyree L. Bell, Chairman; Joseph B. Rucker, Jr., Harlan Ray, D. Harold Byrd, Frank H. Malone, Jr., James S. Hudson, Howard Grubbs, Felix McKnight, H. A. Widdecke, Ray Beall, Jack Lowe, C. Andrade, III, Alton W. Cherry, Robert L. Clark, William R. Moore, H. M. Walne.

STADIUM COMMITTEE: E. Cowden Henry, Chairman; Frank H. Malone, Jr., James H. Stewart, Howard Grubbs, Frank Langston, Karl Hunt.

SPECIAL EVENTS COMMITTEE: Frank Langston, Chairman; William E. Mitchell, L. B. Houston, Ben Lee Boynton, Tom McHale, Clinton Moss.

TEAM RECEPTION COMMITTEE: Otto H. Eisenlohr, Chairman; George P. Macatee, Jr., Leonard Green, Joseph B. Rucker, Jr., Howard Grubbs, Meyer Donosky.

*Season's Greetings and Best Wishes*  
to the  
**Cotton Bowl Athletic Association**



**The Dallas Athletic Club**

ALLAN SHIVERS  
GOVERNOR



EXECUTIVE DEPARTMENT  
AUSTIN, TEXAS

December 1, 1953

GREETINGS TO COTTON BOWL FANS:

Two of the South's greatest teams will meet in the Cotton Bowl for this season's Dixie Classic.

For Alabama, it will be the twelfth Bowl game -- a record that includes six Rose Bowl appearances, two Sugar Bowl games, two Orange Bowl classics, and a previous Cotton Bowl performance. We are glad to welcome this perennial Bowl team, the Southeast Conference champions, to Texas, under the leadership of Coach Red Drew and Athletic Director Pete Cawthon. Pete was mentor for the Texas Tech Red Raiders when they played the Galloping Gaels of St. Mary's University in the New Year's Cotton Bowl game in 1939.

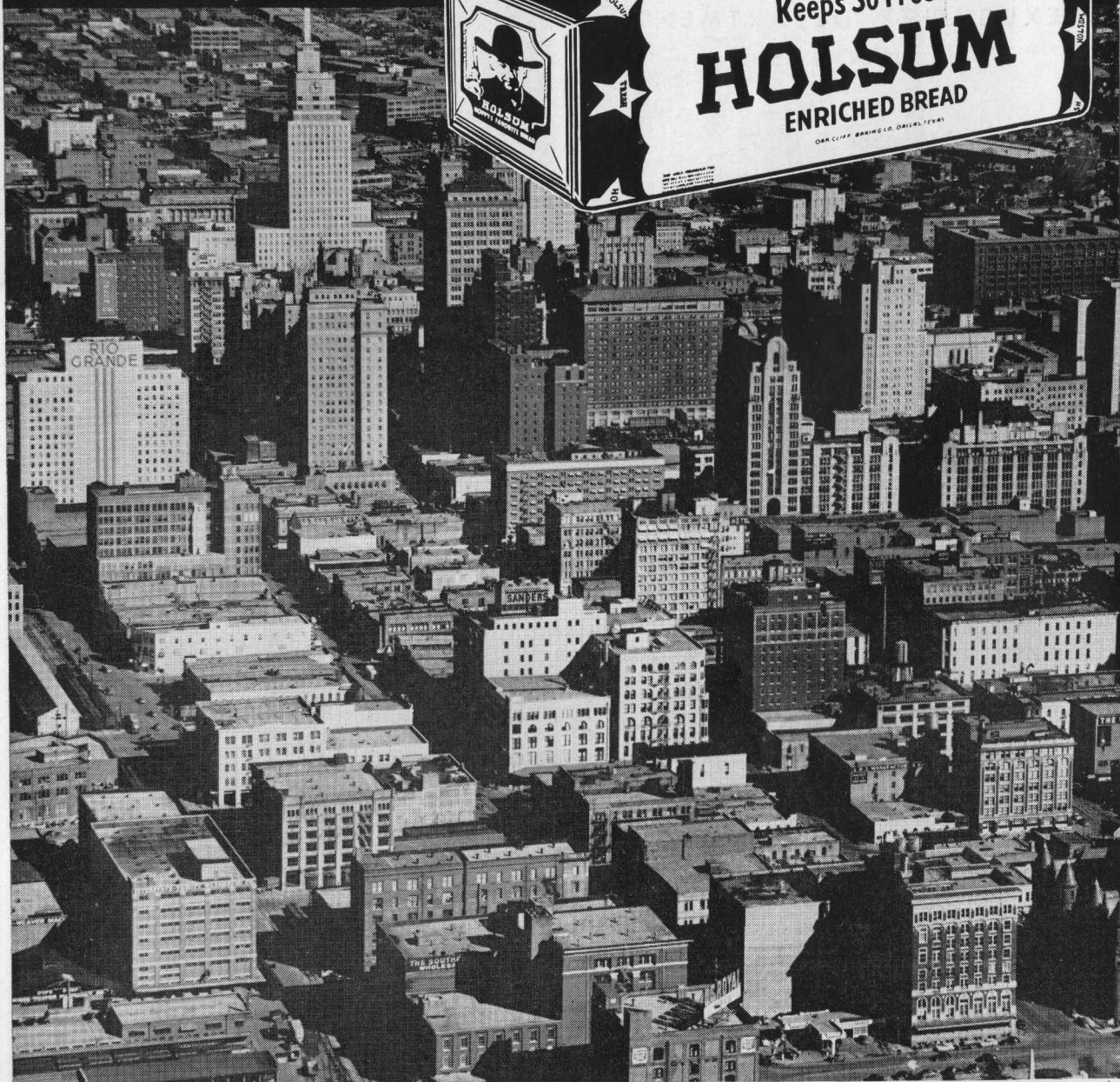
Rice, the Southwest Conference champion, has appeared twice before in the Cotton Bowl and once in an Orange Bowl game. The Owls never have lost a Bowl contest. This team emerged victorious from a hard-fought Southwest Conference season.

We welcome Governor Gordon Persons of Alabama and all of his fellow-citizens who have come to Texas to see this contest between two outstanding athletic organizations.

*Allan Shivers*  
ALLAN SHIVERS  
Governor of Texas

DALLAS . . .

a **HOLSUM** Town



**HOLSUM** Fresh Twice Daily



## THE COTTON BOWL STORY

BY JERE R. HAYES

Sports Director, Dallas Times Herald

From a sportsman's dream to the nation's model bowl game.

That, in a nutshell, is the story of the Cotton Bowl.

Back in the early fall of 1936 J. Curtis Sanford, Dallas oilman and sportsman, dreamed of a New Year's Day Classic for Dallas along the lines of California's Rose Bowl. He mentioned the idea to some of his friends and they looked at him and shook their heads sadly. But Sanford wasn't the type to become discouraged easily, even when the schools he approached later demand "cash on the barrel-head" as their guarantee (\$10,000) for playing, and the officials in charge of the bowl were just as exact. Sanford got busy and with the aid of a few friends and the sports writers, staged the first Cotton Bowl game in 1937, a contest that saw Texas Christian University defeat Marquette, 16 to 6, before a crowd estimated at something less than 20,000 fans. It cost Sanford several thousand dollars, but he put on a good show and the present classic was on its way.

When Sanford turned the Cotton Bowl game over to the Southwest Conference in 1941, it had become a money-maker, despite the fact that for two years the Southwest Conference champions were not available, and "outsiders" were called on to perform.

Under the Southwest Conference's guidance, the loop's champions were automatically named as the "host" team in the New Year's Day game, and the classic made rapid strides toward its present status—as fine a bowl contest as you'll find in the nation.

As a matter of fact, a year or so back when the National Collegiate Athletic Association found itself with a "hot potato" on its hands in the form of objection to all post-season games, it was the Cotton Bowl that was offered as a "model" promotion. The local bowl venture is a non-profit organization, all the monies going to the guest team and the Southwest Conference schools. Every team in the Southwest Conference shares

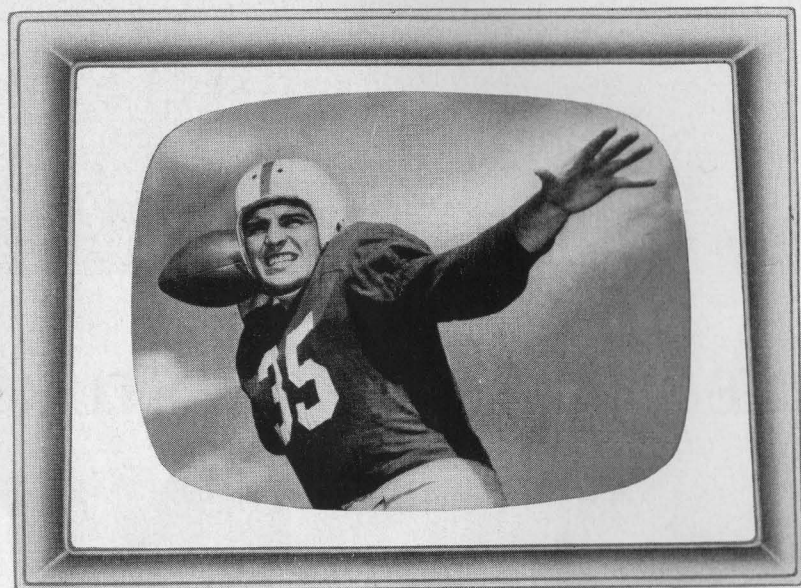
(Continued on Page 84)

# SO MUCH KINDER TO YOUR EYES SYLVANIA TV

WITH

## HALOLIGHT

The Frame of Light for Greater Viewing Comfort.



**YOU'LL CHEER** too when you see television's clearest picture surrounded by a frame of soft, cool light. Yes, **HALOLIGHT** makes worlds of difference in enjoyment and eye comfort. It also makes the picture seem even larger . . . and clearer. Before you buy TV see **HALOLIGHT**. You too will be convinced that **HALOLIGHT** is today's greatest eye-comfort feature in Television.

**Only SYLVANIA** has **THE PHOTOPOWER CHASSIS**. Wherever you live—city or country—Sylvania Television can't be beat for clear rock-steady pictures.

**Only SYLVANIA** has **MASTERCRAFT CABINETS**. There is a handsome Sylvania Television model just made to suit your budget . . . your home. 17-, 21-, 24- and 27-inch picture screens.

When you see Sylvania Television for yourself you too will know why it is America's fastest growing television!

Sylvania Electric Products Inc., 254 Rano Street, Buffalo 7, New York

**HALOLIGHT** and **PHOTOPOWER** are Sylvania Trademarks

### VISIT YOUR SYLVANIA DEALER TODAY!

## COTTON BOWL ALL-STARS

By **BILL RIVES**  
Sports Editor, Dallas Morning News

One of the great honors available to the competing teams in the game today is not only the opportunity to emerge with a satisfying victory, but the chance to place a player or two on the all-time Cotton Bowl team.

But that is an objective difficult to achieve, for the all-time Cotton Bowl team is one of the most powerful aggregations ever assembled in the minds of football observers.

It takes a tremendous performance to push aside such former football titans as Center Ki Aldrich of TCU (1937), Quarterback Sammy Baugh (TCU, '37) and Fullback John Kimbrough (Texas A&M, '41).

During the past seven seasons, only one player—End James (Froggy) Williams of Rice—has been able to crack the monopoly exercised by the great players of the past.

Incidentally, each of today's competing teams—Rice and Alabama—has contributed one man to the all-time team. Oddly enough, both were ends: Williams of Rice, the top player in the Owls' 27 to 13 victory over North Carolina in 1950, and the Crimson Tide's Holt Rast, who was a tremendous two-way player as Alabama licked the Texas Aggies, 29 to 21, in 1942.

One of the reasons it has been so difficult for any player to earn his way to the team in recent years was the shift to two-platoon football.

How could you remove a man who was a standout on both offense and defense, and replace him with a player who was an offensive or defensive specialist?

But now, the double-duty player is back in football. Today, for the first time in several years, the iron men will be back on the Cotton Bowl sod in the annual classic.

One of them might edge his way into the all-time list of "starters." Failing that, he still may play well enough to make the honorable mention list, which in itself is no mean feat.

Certainly, there are players on both the Owls and the Red Elephants who are capable of performing to such a degree that they will force off the all-time team some star of the past.

The Rice All-American fullback, Kosse Johnson,

could do it. Or so could the Owls' wild-running Dicky Moegle, or their tackle, Dick Chapman, or one of their guards, Kenny Paul or John Hudson.

And Alabama's All-Southeastern Conference halfback, Corky Tharp, might have such an explosive afternoon that he would be placed on the all-time eleven. Halfback Bobby Luna, Fullback Bill Stone, Tackle Ed Culpepper—they are among other Alabama possibilities.

Here is the present all-time team (the full list of all-stars will be found elsewhere in your program):

Ends, Rast and Williams; tackles, Jim Kekeris (Missouri, '46) and Martin Ruby (Texas A&M, '42, and Randolph Field, '44); guards, Charles Henke (Texas A&M, '41) and Jack Freeman (Texas, '43); center, Aldrich; backs, Baugh, Bobby Layne (Texas, '46), Glenn Dobbs (Randolph Field, '44) and Kimbrough.

With a team like that, anybody would be willing to coach it and not be bothered about the cry of the wolves!

The only way a player can make the all-time squad is to prove his right to be on it through his performance in the Cotton Bowl game itself. Past reputations mean nothing. Many great All-Americans have failed to make the grade, simply because their performances in the Cotton Bowl game were not up to par, or were not good enough to force one of the super-stars off the team.

Here's how the team changes, if any, occur:

The outstanding players of each Cotton Bowl game are determined by a poll of the newspapermen, taken immediately after the contest. The results are passed to a special Cotton Bowl committee, consisting of the sports editors of The Dallas Morning News, the Daily Times Herald (Dallas), the Associated Press, the United Press and the International News Service.

This committee considers the evidence. It compares the performances of that day with those of the past, and its decision determines whether any player makes either the all-time team or the all-time squad.

It takes a truly great player to become a Cotton Bowl immortal. You may see one out there on the field today.

# A COMPLETE LOAN SERVICE

## ● *Real Estate Loans*

Commercial  
Residential  
Industrial

## ● *Modernization Loans*

## ● *Property Management*

**T. J. BETTES COMPANY**

DALLAS    HOUSTON    FORT WORTH    LUBBOCK  
BEAUMONT    SAN ANTONIO    CORPUS CHRISTI    LITTLE ROCK

## THE 1953 CRIMSON TIDE

By BOB PHILLIPS  
Birmingham Post-Herald Sports Writer

University of Alabama, pioneer bowl team of the South, comes to Dallas for its second Cotton Bowl appearance and spectators may expect to see another colorful aggregation.

Ever since 1925 Crimson Tide went West and stunned the Pacific Coast with a hair-raising 20-19 victory over Washington in the 1926 Rose Bowl contest, Alabama teams have been eyed by schedule committees for the New Year's Day programs.

People know the Tidesmen are always colorful, even in defeat, which rarely has been their fate.

The match here with Rice will be Alabama's twelfth bowl start. The Tide has won seven, lost three, tied one, its most recent conquest having been a crushing 61 to 6 triumph over Syracuse in the 1953 Orange Bowl match.

This year's Tide is a well-balanced array of topnotch performers, rather than a team paced by two or three bright particular stars.

Alabama is coached by Harold (Red) Drew, who was end coach on the 1941 eleven that won from Texas A&M 29 to 21 in the 1942 Cotton Bowl.

Drew became head coach in 1947 when Frank Thomas retired and soon installed the T attack as a supplement to the old-style Notre Dame shift into the single-wing. Now he's featuring the Split-T, with occasional use of the single-wing.

Alabama had developed the two-platoon system to a high point when the rules were tightened on substitution last winter. Drew was a strong voice against the change but fell in line and after a slow start, his 1953 team was going at a steady clip when the campaign closed.

Drew has used about 25 players in the harder games, sometimes substituting by units, sometimes employing spot substitution.

Directing the attack have been Quarterbacks Bart Starr and Albert Elmore, both sophomores. Starr had No. 1 rank at the outset, having lettered

as a freshman, but Elmore has come fast and was a star in the big wins over Georgia Tech and Auburn. He played nearly 60 minutes against Tech—Starr being injured. Against Auburn it was his No. 2 team that suddenly drove 68 yards in six running plays for a touchdown to tie the score at 7-7.

Elmore is a 190-pound, 6-2 youth who likes the rugged going of the ball-handler in Split-T keeps. Starr is the team's top passer and punter but at 180 and six feet is not the driving runner that Elmore is.

Operating with Starr in the first backfield are Bobby Luna and Corky Tharp, the latter a swift, elusive carrier, and Alt. Capt. Tommy Lewis, full-back. Hootie Ingram, however, displaced Luna as a starter in several games and it was he and No. 2 Fullback Bill Stone, a Korean war veteran, who alternated in drives for the big touchdown against Auburn.

Stone and Lewis are key men in the attack and also as linebackers in the defense. Stone is the more elusive runner, Lewis the more powerful.

Bill Oliver, a gangling youth standing 6-1 and weighing 180, is listed as No. 2 right halfback behind Tharp but he was the backfield's brightest star in the Tech and the Auburn games. Oliver runs well and is a clever pass receiver but he shines brightest defensively, especially against passes.

The line is built around two fine centers, Ralph Carrigan and Vince DeLaurentis. These boys were defensive players last year and they learned fast when asked also to play offense as well.

Capt. Bud Willis at right end is another who has done a quick changeover to double duty. Last year he was strictly a defensive performer. Joe Cummings, the only Texan (Muleshoe) on the squad, is the regular left end.

Guards Charlie Eckerly, Bob Wilga and Harry Lee, and Tackles Sid Youngelman, George Mason and Jack Smalley are other line dependables.

*The Official Watch for Timing Today's Game is Longines—"The World's Most Honored Watch"*

*New Year's Greetings from*

## **SAM P. WALLACE & CO.**

**Mechanical Contractors**

**Tower Petroleum Building—Dallas**

**This firm of mechanical contractors is built around a nucleus of men with many years of practical mechanical engineering experience . . . men with "know-how" who have worked with contracts of virtually every kind . . . contracts including work in the nation's largest plants and projects for private concerns and the United States Government.**

**Plumbing • Heating • Air Conditioning  
• Process Piping • Power-Plant Work  
• Sewerage and Water-Treatment Plants**

## **"RED" DREW OF ALABAMA**

By ALF VAN HOOSE  
Birmingham News Sports Writer

He's no longer a junior partner in Alabama's famous bowl manufacturing business. No, sir, this year Red Drew moved into the front office.

The former red-head (now greying after 33 years of football professorship) takes office right alongside Wallace Wade and Frank Thomas. And rightly so.

Drew has been head man of University of Alabama football for seven years. Three of those seven teams he has carried into January 1 games, first to the Sugar Bowl in 1948, then to the Orange Bowl in 1953, now to the Cotton Bowl to start 1954.

That's a .429 performance, better than either Wade or Thomas mustered in earlier terms in front of the Crimson Tide.

Wade built three Rose Bowl teams in his 1923-1930 stay at Tuscaloosa (two of 'em won, one tied). Thomas constructed six bowl outfits in his 15-year regime which preceded Drew's (four won, two lost).

Drew can share part of Thomas' bowl spotlight. Drew was end coach under the great Notre Dame box formation teacher for a dozen of Thomas' 15 years.

When Thomas succeeded Wade as Crimson Tide coach in 1931, Drew joined Tommy as end coach. He kept the post until 1942. Then he went off to war as a lieutenant commander and remained until Germany, then Japan, had been licked.

He rushed back to help Thomas coach the 1945 undefeated, untied Tide team which routed Southern Cal in the Rose Bowl, 34-14.

In 1946 Drew finally was lured away from Alabama to a head coachship elsewhere (he had had opportunities before from major schools). He went away to the University of Mississippi for less than a semester.

When Frank Thomas was forced to retire from active coaching ranks in early 1947, he offered the Alabama head coach mantle to Drew. Drew accepted.

Drew's regular schedule record since has been 55 wins, 21 losses and five ties. He also has a 27-7 loss to Texas in the Sugar Bowl, a 61-6 romp over Syracuse in the Orange Bowl last January 1.



**HAROLD "RED" DREW**  
Head Coach, University of Alabama

Going back of Drew's Alabama career, we find him a native of Dwyer Brook, Me., born November 9, 1894. Jumping quickly to college days, he played football, basketball and participated in track at Bates College. World War I interrupted his collegiate days but he came back for a final year of athletics and a diploma in school term 1919-20.

In 1924 he headed South and accepted the football and athletic director's chair at Birmingham Southern. He was there through the 1927 school year.

He shifted to the University of Chattanooga as Thomas' assistant in 1928. When Thomas went to Georgia as backfield coach under Harry Mehre in 1929, Drew took over as head coach for two years.

As stated, Drew joined Thomas at Alabama in 1931 as end coach. He developed some pretty fair Crimson Tide wingmen, such fellows as Don Hutson, Bear Bryant, Perron Shoemaker and Holt Rast.

Drew is a fundamentalist, a gentleman whose ideas are old enough to include solid oldtime blocking and tackling, yet, young enough to pioneer the varied style of attack.

(Continued on Page 82)

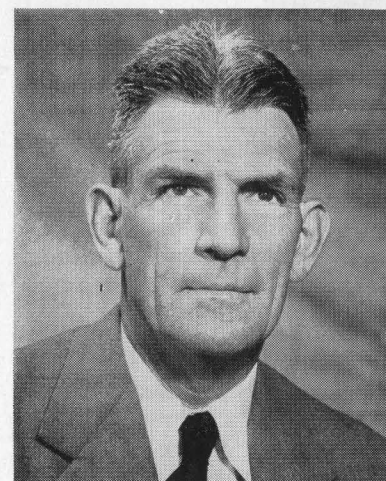
*Compliments of*

# LA MODE



FOR FASHIONS YOU LOVE TO WEAR

## ALABAMA COACHING STAFF



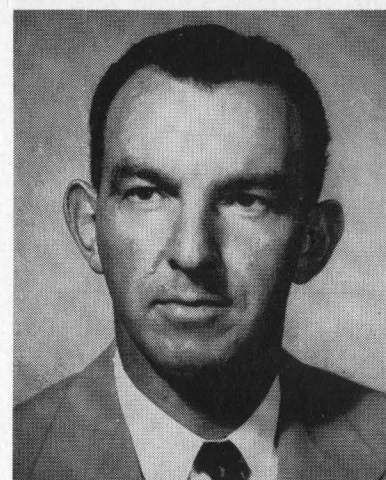
**HENRY CRISP**  
Line Coach



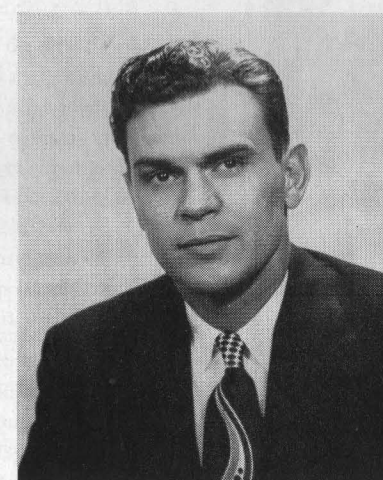
**MALCOLM LANEY**  
End Coach



**TILDEN CAMPBELL**  
Backfield Coach



**LEW BOSTICK**  
Guard Coach



**JAMES NISBET**  
Asst. Coach



**JOE KILGROW**  
Freshman Coach



**PETE CAWTHON**  
Athletic Director



**JEFF COLEMAN**  
Business Manager of Athletics

# RED ELEPHANT STARS

By HOBART GROOMS  
Birmingham News Sports Writer

When Alabama faces Rice in the Cotton Bowl on New Year's Day, football fans can rest assured that they will see one of the most colorful teams to come out of Tuscaloosa in several years. The Tiders have the boys who can run, pass, kick, block and tackle. It'll be up to the Owls to see if they can do it better.

In Corky Tharp, Bama has "the best running back in the Southeastern Conference," according to the Associated Press. A 5-10, 170-pound junior from Birmingham, Tharp piled up 607 yards on 111 rushes and scored five times. He's famous for long scoring dashes, having run for 40, 63 and 63 yards, as well as an 88-yard punt return. He led the SEC last year with a 6.5 yard rushing average, on 667 yards. AP and UP named him on their first-string 1953 all-conference teams. He's also a highly-feared pass catcher, having hung on to 11 tosses for 129 yards and one touchdown during the '53 season. Punt returns are another of Tharp's specialties. Corky led his mates in that field, lugging five back for 150 yards.

Though only a sophomore, Bart Starr has already carved out a big hunk of fame for himself as one of Bama's greatest passers. During the past season, the sophomore from Montgomery, Ala., connected on 59 out of 119 tosses for 870 yards and eight touchdowns. He led the SEC in touchdown passes thrown. Only six of his aeriels were intercepted. Only All-American Harry Gilmer's 930 yards in one year surpasses Starr's mark. He's a dangerous punter too, having booted 30 times for a 41.4 average.

Senior Tommy Lewis and Sophomore Bill Stone will share the load at fullback. Coach Red Drew calls Lewis, "the best fullback I ever coached." When Lewis was injured against Tennessee, Stone came to the rescue and ended up as Bama's second best runner, with 336 yards on 73 carries and a 4.5 average. Lewis finished with 244 yards on 60 tries and a 4.1 mark. Both are excellent blockers and steady defensive performers at line-backer. Lewis was named on UP's All-SEC third team.

Top man in the line is Center Ralph Carrigan, termed "one of the five best linebackers in the country," by a national football magazine. Three times named on AP's all-conference team, the 195-pound senior has shown that he can handle the running chores at fullback if needed. His play against LSU, Mississippi State, Tennessee and Georgia Tech drew praise from Line Coach Hank Crisp, who calls Ralph, "one of the best."

At ends, Alabama will start Joe Cummings and Captain Bud Willis. Cummings, a native of Muleshoe, Texas, came to the Capstone as a quarter-

back but was switched to the flank because of his speed and ability as a pass catcher. Willis played only defense until this year, and made a name for himself while doing it. AP selected Willis as the "best defensive end in the conference" this year, while the Tifton, Ga., boy was leading his teammates as a pass receiver. He caught 11 for 191 yards and two touchdowns. Willis reminds one of the old "60-minute" ball players with his seemingly inexhaustible supply of energy.

George Mason and Sid Youngelman are considered two of the top tackles in the conference. Mason stands 6-1 and weighs 205, while Youngelman is 6-3 and tips the scales at 215. Both are fast, aggressive and hard to move out of the way. Hank Crisp, Tide line coach, recently termed Mason as "the most underrated ball player in the conference." A third tackle, Jack Smalley, ended up high on his coaches' list. A senior from Tuscaloosa, the well-built 6-2, 210-pounder is the Tide's best blocker. The Owls will have to watch him on offense.

Guard Harry Lee adds speed and punch to the Crimson's front wall. Just a junior, Lee has had plenty of experience on offense and defense. He's a deadly tackler, and he makes them when they count the most. Lee's running mate is Charley Eckerly, a dumpy (5-8), 210-pounder. Not as fast as Lee, he's equally aggressive and a hard tackler as well.

Albert Elmore, 6-2, 190-pound quarterback, will spell Starr at the signal calling spot. Just a sophomore, he's a good runner (162 yards on 43 tries) and calls his plays wisely. He took over for Starr against Georgia Tech, and guided Bama to one of its greatest victories in recent years. He can kick and throw if the occasion demands. His father, who played end on Alabama's 1925 Rose Bowl team, was coached by Rice's Jess Neeley.

Left half is another Crimson strong spot. Bobby Luna and Cecil (Hooty) Ingram more than fill the bill here. Luna is a triple-threat in every sense of the word. He picked up 309 yards rushing, caught nine passes for 116 yards and one touchdown and punted 29 times for a 34.5 yard average. His 30-yard field goal gave Bama its margin of victory over Auburn as the Tide belted their arch-rivals for the SEC title.

Ingram, like Luna, can run, pass and kick. An ideal man for the Notre Dame box offense, Hooty also excels as a defensive safety man. He was named on the All-SEC defensive team last year, when he led the nation in pass interceptions with 10. He's dangerous returning kickoffs and punts, having led the conference in '52 in the latter department.



*the Eyes of the Nation are on the*

## Southland

The Southland is no longer only the agrarian giant of the nation . . . it has become a giant of industry also. Daily, multi-million dollar industries arise throughout the South. Industry-sponsored and university research laboratories are developing the South's great and heretofore barely tapped resources . . . water, petroleum, natural gas, minerals and forests . . . bringing about phenomenal developments in chemicals, hydro-electric energy, electrical goods, metals, synthetics. And the traditional industries of the South . . . textiles, wood products, tobacco, livestock, fruits and vegetables . . . continue in growth and importance.

In this newly diversified Southland, Southern leadership has established a wise balance between agriculture and industry. The new is welcomed and encouraged . . . and the old ways are protected so that today, soil conservation and rangeland improvement are major projects. Add to this long-range policy of wisdom, the tangibles of extensive water and rail transportation, economical location sites and a stable and competent labor supply and it is apparent that the Southland's potential of growth and prosperity is unlimited.

Yes . . . the eyes of the nation are on the Southland, viewing with interest and favor its steady, determined progress. Southland Life Insurance Company, motivated by this same forward spirit, is proud of its contributions to this development as part of the great South. It is constantly striving to provide better services for the South . . . and for the Nation.

### SOUTHLAND LIFE INSURANCE COMPANY

"Serving Since 1908"

HOME OFFICE • DALLAS

LIFE • ACCIDENT • HEALTH • HOSPITALIZATION • GROUP



**For  
97 Years  
the GREATEST Name  
in  
Milk**



***Borden's***  
**RICH MILK . . RICH RECIPE ICE CREAM**

**IF IT'S BORDEN'S IT'S GOT TO BE GOOD!**

## HOME OF THE CRIMSON TIDE . . . UNIVERSITY OF ALABAMA

In 1860 with the outbreak of the War Between the States, the University began training soldiers for the Confederacy. When Federal troops stormed Tuscaloosa, Alabama, on April 3, 1865, one of the objects of destruction was the University. Craxton's Raiders burned the University buildings to the ground and it was not until 1869 that instruction was resumed at Alabama.

Today's buildings at the University are a composite of the old and the new. There is an old quadrangle constructed immediately after the Civil War. And the new quadrangle is squared off by one of the South's finest libraries, the Amelia Gayle Gorgas Library, also by the Administration building, a new Physics building, the Commerce building, a Biology and a Chemistry building.

The physical structure of the University now consists of 287 permanent and temporary buildings spread over 570 acres in Tuscaloosa. In addition to this, its medical and dental college facilities in Birmingham cover almost three city blocks.

During the academic year of 1951-52, instruction was given 23,759 students. Enrollment on the main campus in Tuscaloosa is customarily between 5,000 and 7,000 each semester. Through the University of Alabama Extension Division, centers are operated at Huntsville, Mobile, Montgomery, Birmingham, and Gadsden, with a branch at Selma. Enrollment at extension courses totals over 3,000 students per semester.

With Dr. Oliver Cromwell Carmichael, an educator of national stature at the helm, the University of Alabama opened its doors September 21, marking its one hundred twenty-third year of service to the State of Alabama, to the South, and to the Nation.

Dr. Carmichael came to the top University office in September of 1953 from the presidency of the Carnegie Foundation for the Advancement of Teaching, New York, a position he had held since 1946. He also served as chairman of the Board of Trustees of the New York State University system. He is a Rhodes Scholar, a past president of Alabama College, and a former Chancellor of Vanderbilt University.

One of the oldest institutions of higher learning in the "Deep South," the University of Alabama was founded in 1819. The school opened its doors in 1831.

Today the University of Alabama has among its alumni such leaders and persons of prominence as Senators John Sparkman and Lister Hill, of Alabama; Supreme Court Justice Hugo Black; Robert T. Vandergraff of M.I.T. whose invention, the Vandergraff generator has been termed by fellow scientists as "of incomparable value" in the development of nuclear physics.

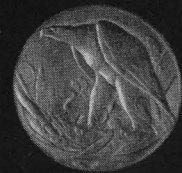


**DR. GEORGE DENNY**  
Chancellor



**DR. OLIVER CARMICHAEL**  
President

OFFICIAL WATCH FOR THIS GAME



*Longines*



*The World's Most Honored Watch*



LONGINES WATCHES ARE OFFICIAL  
FOR TIMING  
CHAMPIONSHIP SPORTS IN ALL  
FIELDS THROUGHOUT THE WORLD

*Product of  
Longines-Wittnauer Watch Company*

## SOUTHWESTERN FIRE & CASUALTY COMPANY

DALLAS, TEXAS

FOSTER YANCEY, *President*

T. A. Manning & Sons, *Underwriting Managers*

## THE OWLS FROM RICE

By CLARK NEALON  
Sports Editor, Houston Post

Rarely has any football team so completely reflected its head coach as does the Rice Institute team that meets the University of Alabama in the Cotton Bowl game today.

Not that he would want to for a moment, but Jess Neely could deny this ball club about as quickly as he could deny that he's a gentleman of the Old South.

In their deportment on and off the football field, in their approach to the game, in their almost cold efficiency and, finally, in their love of leather-popping contact, these Southwest conference representatives reflect the kind of football that made Neely accepted as one of Vanderbilt University's greatest captains in his playing days.

As fuzzy-faced sophomores in 1951, they acquired the name of "The Up-end Kids" for their love of tacking and blocking at its rugged best. These Rice seniors today—most of them—were members of the defensive platoon that season, and as late as November threw a scare into the conference. They finished with a 3-3 1951 record in the league, won four and lost two in 1952 before the 1953 season that saw them tie with Texas for the Southwest title and win the Cotton Bowl host role because they beat Texas 18-13.

It's almost unfair to the rest to name any stand-outs on this predominately senior team. It's so much better to remember that they came on the Rice campus, these seniors, as wide-eyed, eager kids with a deep love of the game of football, and they never became sophisticated. They played their last regularly-scheduled game against Baylor with that same eagerness, yet with efficiency that inspired awe in 68,000 fans and in Coach Neely, who doesn't "awe" easily.

Five of these Rice seniors have been regulars for their three varsity seasons—Tri-captains Richard Chapman, John Hudson and Leo Rucka, plus David (Kosse) Johnson and Max Schuebel.

Six of them have played in 30 varsity games for Rice—the maximum. They are Chapman, Hudson, Rucka, Dan Hart, Horton Nesrsta and W. C. Treadway.

They're truly an unusual group, these seniors. They showed it in their first scrimmage as varsity candidates in the spring of 1951. When that scrimmage was over, the vigor of the intra-squad battle caused Coach Neely to turn to Line Coach Joe Davis and ask, "Joe, do you think we ought to introduce these boys again?"

As mentioned earlier, Neely doesn't "awe" easily. Fact is, Jess is most composed in his approach and handling of a football game, and just as calm in the dressing room after the game. No dramatics, no superlatives.

Twice in their careers "The Up-end Kids" have been mainly responsible for breaking that composure. As raw sophomores in 1951, they beat

SMU in Dallas after Fred Benners and company had beaten Notre Dame. In the dressing room after that one, Neely was as close to being "giddy" as we've known him to be in 14 years. "The Kids" almost looked down their noses at the "Old Man," saying, in effect, "What's all the fuss about, we came here to beat 'em, didn't we?"

Then, in the Baylor game of 1953, when the Owls had given a flawless performance for 36 minutes and built up a 41-7 lead over the Bears, Neely and the rest of the Rice squad went out to the sideline to applaud the efforts of the team. The only thing was that the squad, in fact all the wildly-cheering people in the stands, had relaxed and sat down. A lonely figure still stood on the 50-yard line, however, oblivious to anything, almost absent-mindedly clapping his hands. It was Neely.

Okeh, what went to make up this team:

Let's take the tri-captains first, all three linemen. Chapman, All-Southwest tackle, is a 6-foot, 6-inch, 225-pound dynamo from Waxahachie who is majoring in atomic physics.

Hudson, a Center, Texas, boy who is a tightly-knit 6-foot, 220-pounder who made the NEA All-America team as a guard.

And Rucka, from Crosby, 210-pound All-Southwest center who comes from a farming community and can do a thorough job of tilling the soil himself.

Then there is Kosse Johnson, the All-America fullback from Baytown, who, his team-mates will tell you, was the heart of this Rice team.

The lightest All-America fullback at 170 since Elmer Layden of Notre Dame's "Four Horsemen," Kosse led the Southwest Conference in ball-carrying with 944 yards, which was the second highest total in the nation. He also led the Southwest in scoring with 62 points. Even more than that he got the "big" yards time and again on offense, backed the line on defense with deadly efficiency.

Doubtless his greatest of many great days was against Texas when he just refused to be beaten, and his spirit seemed to be caught up by the Rice squad in their last minute victory.

Hart, the youngster from Milby who played a little of everything in high school and saw service at guard before he became an end and Rice's defensive signal-caller, was the Owl who caught the pass from Leroy Fenstermaker for the touchdown that beat Texas. Thus Dan joined company like James (Froggy) Williams, Frank Steen and Windell Williams in Rice history of wins over the Longhorns.

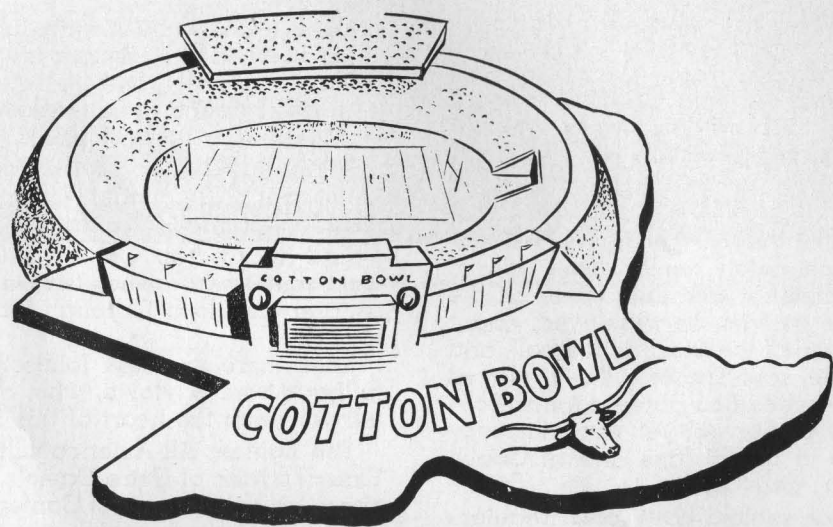
Schuebel, a Houston product and a vastly under-rated tackle, and Blois Bridges of Grand Prairie, an end, bothered by injuries early in his

(Continued on Page 86)

**WELCOME . . . and Best Wishes!**

★

**ALABAMA'S CRIMSON TIDE  
RICE OWLS**



**WE** ARE happy to salute and welcome  
to Dallas two great football teams—  
Alabama's Crimson Tide and Rice Owls.  
Best wishes . . . and Happy New Year!

**THREE STATES NATURAL GAS CO.**

**CORRIGAN TOWER**



**DALLAS, TEXAS**

**JESS NEELY OF RICE**

BY DICK FREEMAN  
Sports Editor, Houston Chronicle

Jess Neely, the drawling Tennessean who is the oldest Southwest Conference head football coach in service, is one of the most bowl-conscious mentors in the business.

This is his 14th year as coach of the Rice Owls and his 31st year in the coaching profession.

He has yet to lose a bowl game. His first one was responsible for him graduating from Clemson College to the Owls, by the way. That is his first head-coaching bowl game.

That was in this same Cotton Bowl on January 1, 1940, and from it came two of the best coaches in the game. Neely was leading Clemson, and a brash Irish youngster was leading Boston College.

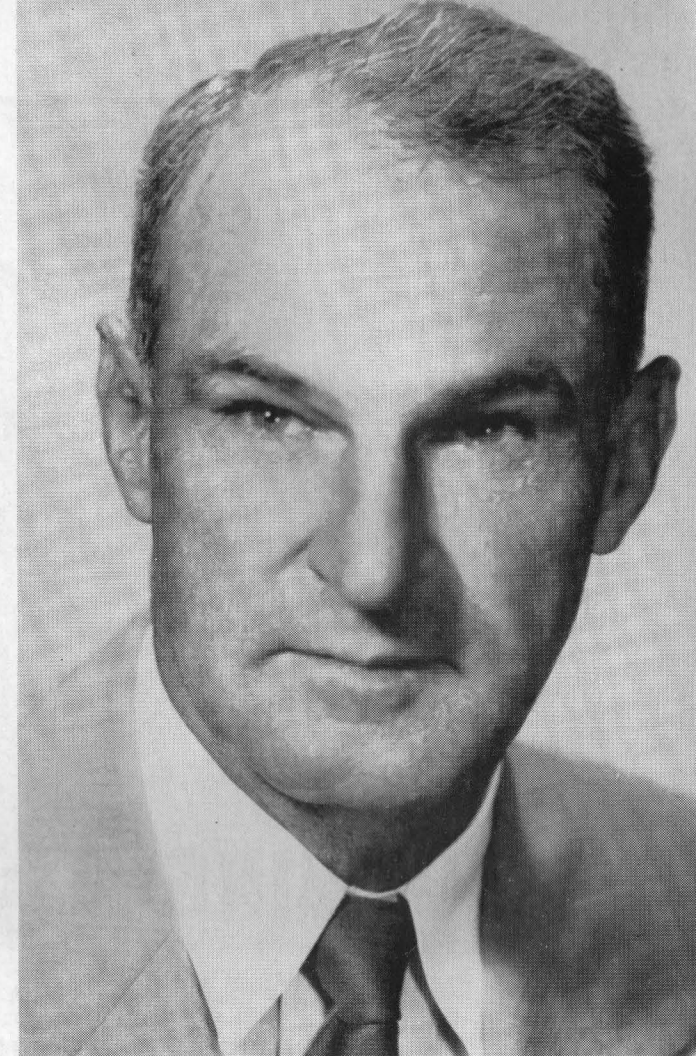
Clemson won the ball game, 6 to 3, and Rice representatives were there to contact Neely after the game. The fine showing of the single wing as played by Clemson resulted in Jess moving to Rice in 1940.

The Boston College coach? One Frank Leahy, now the famed Notre Dame coach.

Neely, a graduate from Vanderbilt, where he played in the backfield on offense and at end on defense, had his first bowl experience with Alabama, his foe today. He was an assistant coach with the Crimson Tide back in 1931 when it whammed Washington State 24 to 0 in the Rose Bowl.

He has taken Rice into two bowl games before this one; beating Tennessee 8 to 0 on January 1, 1947, in the Orange Bowl after sharing the Southwest Conference title with Arkansas, and beating North Carolina in the Cotton Bowl January 1, 1950, 27 to 13.

Neely, strict in football fundamentals, usually takes two years to build a winning team. He uses sophomores but little—developing them for the following years.



**JESS NEELY**  
Athletic Director and Head Football Coach  
The Rice Institute

After this game with Alabama, he is losing his entire line with the exception of Guard Kenny Paul, for instance, and he also is losing Quarterback Leroy Fenstermaker and the all-American fullback, Kosse Johnson.

In his over-all Rice record, his teams have won 87 games, lost 53 and tied 4.

He has won one championship and tied two in the rugged Southwest Conference.

While he was starring back in Vanderbilt, he also obtained a lawyer's degree—one which he never used. He went from there to Murfreesboro, Tenn. High, to Southwestern of Memphis, to Alabama to Clemson.

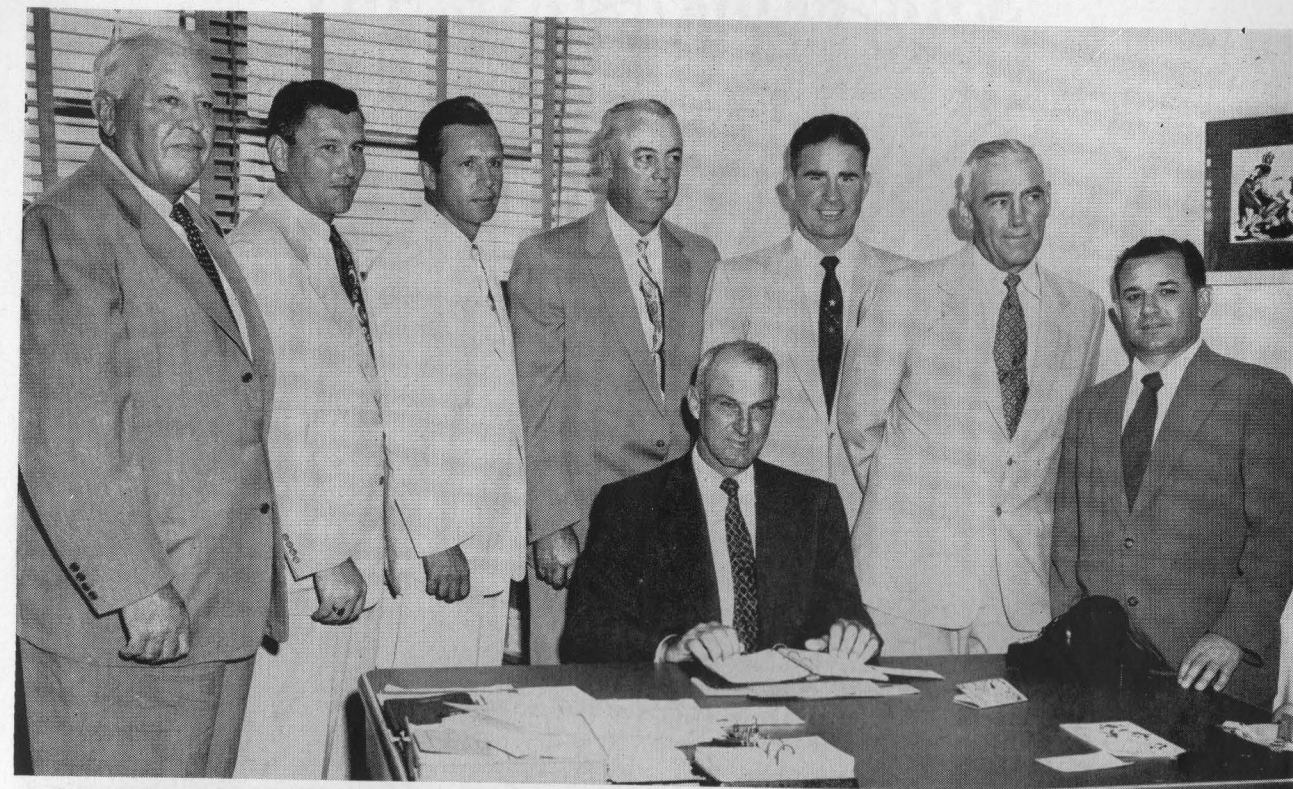
At Rice he stuck to the single wing until he lost his ace, Bob Brumley, a magician with the ball, and then shifted to the T formation.

*A Trade Mark  
that Stands for*  
**DEPENDABILITY**

**PLUMBING**  **HEATING**  
**AIR CONDITIONING**

**FARWELL**  
**COMPANY, INC.**  
*Mechanical Contractors*  
**DALLAS**

## RICE ATHLETIC STAFF



Here is the veteran coaching staff of Rice Institute that rates as one of the finest in the nation, and one of the most experienced in that four members have been in the coaching profession for over twenty years.

Seated is the head football coach and athletic director, JESS NEELY, who this fall is serving his fourteenth year as head man of the Owls. Grouped behind him (left to right) are assistants CECIL GRIGG, who is in his twentieth year on the Rice staff; HAROLD STOCKBRIDGE, who works with varsity backs in the spring, freshmen in the fall; CHARLES MOORE, head freshman coach in football and basketball; JOE DAVIS, valuable coaching aide to Neely for 22 years at Clemson and Rice; A. M. "RED" BALE, able end coach; DELL MORGAN, veteran assistant; and EDDIE WOJECKI, well-known athletic trainer.

## ADMINISTRATIVE



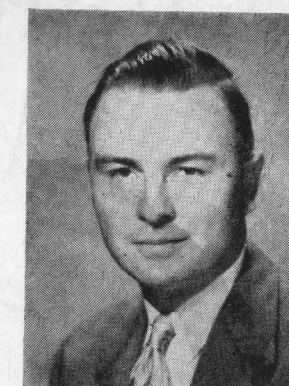
EMMETT BRUNSON  
Track Coach  
Bus. Mgr. of Athletics



DON SUMAN  
Basketball Coach



CARROLL MARTIN  
Office Manager



BILL WHITMORE  
Sports News Director

There are many persons who serve "behind the scenes" in the college grid scene. Pictured here are four full-time administrative members of the Rice staff. EMMETT BRUNSON is athletic business manager, with many and varied duties including the handling of football tickets. "Brun" also is Rice track and field coach, and as a former Olympic coach ranks high in that field. DON SUMAN, best known as head basketball coach of the Owls, in the cagers' "off season" supervises the concessions and football program. CARROLL MARTIN serves as office manager, and has numerous duties in the business office and stadium activities. BILL WHITMORE is sports news director, handling news releases, photos, program editorial copy, press box supervision, and other matters.



## THE STARS FROM RICE

BY GEORGE WRIGHT  
Sports Editor, Houston Press

Coach Jess Neely's great teams at Rice Institute have been known chiefly for team play, for the methodical way in which they mow down the opposition. But the Neely Owls who meet Alabama in the Cotton Bowl don't lack for individual stars.

Best known of these is David "Kosse" Johnson, the fullback who runs like a halfback, a standout performer who was selected for both the Football Writers of America and Associated Press All-America teams, is respected particularly for his consistency.

Second in the nation in rushing with a 10-game total of 944 yards, Johnson's leanest yardage total came in the early season loss to SMU on this same Cotton Bowl gridiron. But even in that one he led Rice rushers with 68 yards, scored the touchdown that had Rice a winner until five minutes before the final gun. And his line-backing was the outstanding feature of that game.

His top single-game rushing total was 137 yards in the regular season finale against Baylor, but his top game of the year was in the narrow victory over Southwest Conference Co-Champion Texas. His inspired runbacks of two free kicks for 40 yards apiece after Texas had desperately given two safeties in an effort to ride out a narrow lead, fired the Owls to their 18-13 victory and is regarded as his finest performance of an All-America season.

Dicky Moegle, the Mr. Outside of Rice's one-two backfield punch, was sixth in the nation in rushing with 833 yards and an average of 7.3 yards per carry. Moegle had a sensational finish, picking up 510 yards in his final four games, all in conference competition. His top single-game total was a 201-yard day against Arkansas.

These two ball carriers, in addition to holding second and fourth positions among all-time Southwest Conference rushers, led the league in scoring during the 1953 season, Johnson with 62 points, Moegle with 61.

Johnson was no one-year flash in the pan. But in 1953 he enjoyed his best year offensively despite taking on a line-backer's rugged job. As a junior in 1952's platoon football he missed two games because of injury, gained only six yards before going out in the first quarter of a third. Yet he gained 592 yards that season, averaged 84

yards in the games he played, only 10 behind his 1953 average. Moegle, a 17-year-old sophomore in 1952, saw only 13 minutes playing time that season.

The Owls boast three All-America performers, a record for a Rice team. Tackle Dick Chapman, atomic physics major, gained the Chicago Tribune's Players' All-America and for the second straight year made the honorary "Students" All-America comprised of exceptional students among America gridmen.

John Hudson, like Chapman an Owl starter for three seasons, was named to a first team tackle position on the NEA All-America selection. A ball hawk, faster than average, Hudson is regarded as a standout pro prospect.

Leo Rucka, easily the class of the Southwest Conference at center, a lad who played in the shadow of All-America Don Rhoden, his fellow line-backer, for two seasons, came into his own with the death of the platoons. A sure snapper-back, he has been the point of the rugged ground game which is Rice's strong point.

Dan Hart, an unsung Owl hero, is the team's defensive quarterback. His big moment came against Texas when he caught a 31-yard pass while bracketed by two defenders for the winning touchdown with only 58 seconds of play remaining. Despite the predominance of a grinding ground game in the Rice attack, Dan ranked seventh among conference pass receivers with 15 catches for 239 yards.

Kenny Paul, the only junior in the No. 1 Rice line, is an exceptional middle guard on defense, has been ranked Hudson's equal by many observers.

Other unsung operatives would include Tackle Max Schuebel, steady senior who also has been a starter for three seasons, a fine blocker; Gordon Kellogg, who came from far back in the list to take over the right halfback position, blossomed as a fine blocker and runner; Horton Nesrsta, defensive halfback ace, smallest halfback in major college football at 137 pounds; the shuttle relay team of Leroy Fenstermaker, Buddy Grantham, Atchley Proctor, Pinky Nisbet, who take turn about shining in the quarterback slot. Stars? Yes, methodical Rice has 'em.

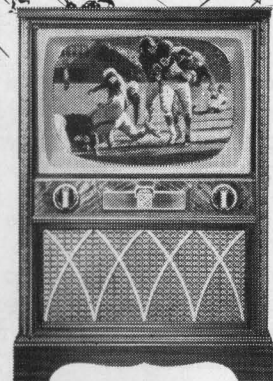
Refresh...  
add zest to the hour

DRINK  
**Coca-Cola**  
REG. U. S. PAT. OFF.

BOTTLED UNDER AUTHORITY OF THE COCA-COLA COMPANY BY  
THE COCA-COLA BOTTLING WORKS

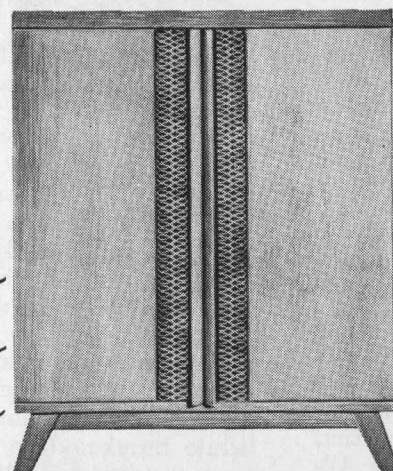
# MAKE DuMont Television YOUR GOAL

for the best football season of your life!



DuMont de Luxe BRADFORD  
English Traditional cabinet, mahogany finish. 21-inch DuMont Selfocus\* tube. Phono jack. Built-in UHF-VHF antenna. Optional 82-channel tuning.

Be as proud and happy as the man with seats on the 50-yard line! Follow the game, close up, to either goal! You'll never see better football on television than you see with the new DuMont—first to match or surpass every other set in every feature at every price!



DuMont Custom NEWBURY II  
Modern styling. Mahogany or limed oak finish. 21-inch DuMont Selfocus\* tube. Built-in drawer for record player. Built-in antenna. 82-channel tuning optional. High-fidelity tone.

## DuMont Invites COMPLETE\* COMPARISON

...feature by feature  
...at every price!

- ★New Clear-Picture Power  
High-resolution picture tubes!
- ★DuMont Selfocus\* Tube  
First with automatic focus!
- ★Optional 82-Channel Tuning  
Most sensitive tuning in television!
- ★Fringe Area Excellence  
Best reception everywhere!
- ★Truer Tone  
Finer circuits, choice woods!

- ★Custom-Crafted Cabinets  
Famous design, finish, construction!
- ★Quality Controls  
—of materials, parts, production!
- ★Thrifter Ownership  
Save on set operation...servicing  
...trade-ins!

Imagine owning **DU MONT®** ...from \$199.95\*\*  
QUALITY TELEVISION

\*Trade Mark

\*\*NO EXTRA CHARGES for full-year picture tube Warranty, 90-day parts Warranty, Federal Excise Tax, built-in UHF-VHF antenna, or mahogany finish. Limed oak or blond finish slightly higher.

AT YOUR AUTHORIZED DU MONT DEALER'S NOW!

**THE BOCK CORPORATION**  
2133 Cedar Springs Avenue • Dallas, Texas  
Distributor

## THE RICE INSTITUTE

The Rice Institute is a non-sectarian institute for the advancement of literature, science, art, philosophy, and letters, and for cultivating other means of instruction.

These objectives of this school, famed for its high academic rating, were set forth in the charter issued by the State of Texas in 1891 under which it was founded.

However, it was many years after the charter was granted that classroom work actually began on the campus of approximately 400 acres that is located about three miles south of the downtown section of Houston, now the largest city in the South with a population of over 600,000 and a metropolitan area close to 1,000,000.

William Marsh Rice, a wealthy philanthropist from New York and New England, had come to Houston in the 1800's to make his fortune. In his late years he expressed a desire to provide a school of higher learning for the growing Texas city near the Gulf Coast. He set up a sizeable fund that became the original endowment of this privately operated school, and had the state charter issued.

In keeping with his desire that the institute should be the finest possible, a plan was agreed upon whereby an extensive study would be made of other schools of higher learning and a building program would be completed before any classes actually were held.

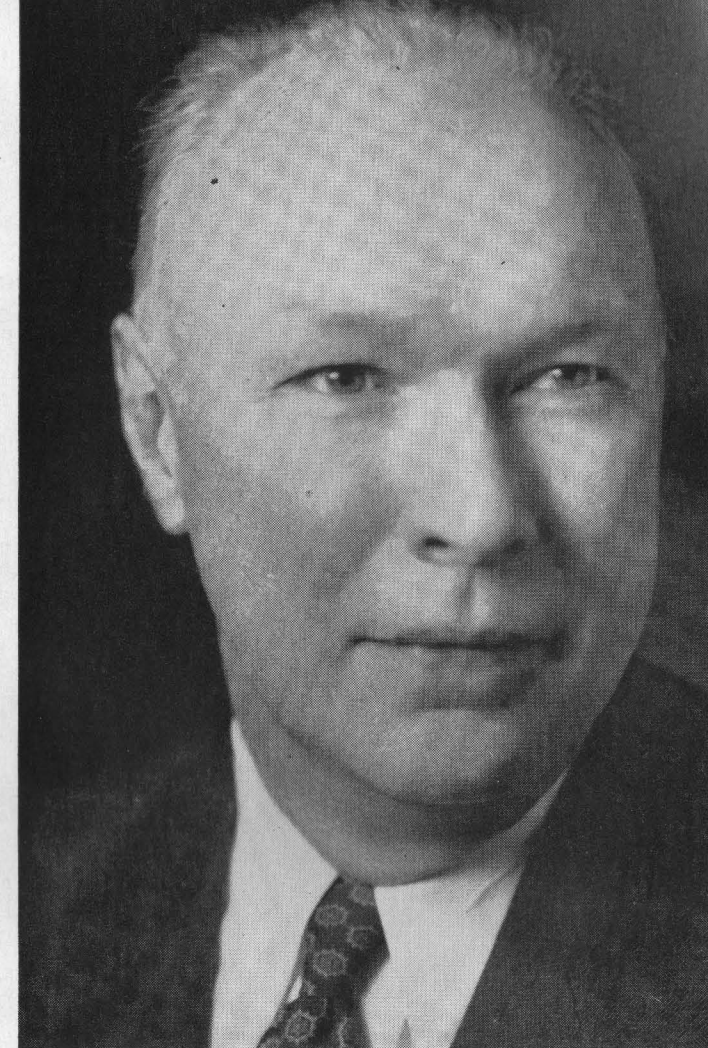
Therefore, it was not until 1912—after the death of Mr. Rice—that class work began at Rice under the leadership of the school's first president, Dr. Edgar Odell Lovett. He was a young professor from Princeton who was given the task of touring the United States and many foreign countries to conduct a thorough study of the curriculum of famous schools after which Rice Institute would be patterned.

From that humble beginning in 1912, with less than 100 students enrolled, Rice Institute has become known throughout the world as an outstanding educational institution.

With its policies governed by a Board of Trustees of prominent Houstonians, and under the administrative leadership of Dr. Lovett—and upon his retirement in 1946—the second president in the history of the school, Dr. William V. Houston, the Institute has shown great progress through the years.

After 1912, the enrollment soon increased, but a limit of about 1,500 students soon was imposed as the maximum to maintain a low student-instructor ratio. Although there has been considerable expansion of the physical plant, the Rice enrollment remains less than 2,000—in fact, just above 1,600, to this day.

Admission requirements at Rice are the highest in the Southwest, and the number of applicants is far greater than those who enroll. But the stu-



DR. WILLIAM V. HOUSTON  
The Rice Institute President

dents who are able to qualify automatically become recipients of a scholarship, for there is no tuition charged.

The Institute is privately endowed and maintains a vigorous investment program that provides the funds for the financing of the well-rounded scholastic program.

As mentioned, there has been a considerable increase in the physical properties. Sports fans, of course, are well aware of the fine 70,000-seat stadium and the big Rice Gymnasium, both constructed within the past four years.

Since World War II, a major building program at Rice has seen such additions as the finely appointed Fondren Library, second largest in the Southwest with over a quarter of a million volumes; the Abercrombie Engineering Laboratory; the M. D. Anderson class room and faculty office building; the modern Wiess Hall, dormitory for men students. Just last spring a building was constructed for the housing of the \$500,000 Van de Graaff machine for research in atomic energy, which has been awarded Rice by the Atomic Energy Commission on a permanent loan for use in advanced atomic studies by the physics department. The research program is under the di-

(Continued on Page 82)

# the best BOWL of all . . .



. . . is the bowl that holds salads  
mixed with *Morton's* Salad Dressing

After the game when the gang comes in hungrier than bears, serve a snack plate of sandwiches, devilled eggs and a rich, satisfying potato salad . . . all of them tasting better with the zesty, rich flavor of Morton Salad Dressing.

Foods *do* taste better with Morton Salad Dressing. The selected wholesome eggs, choice salad oils, fresh spices . . . and expert blending make

Morton Salad Dressing—not just another dressing, but a rich, creamy-smooth, better-tasting addition to your table. Try it and you'll see why MORTON'S Salad Dressing is the all-time Salad Bowl Champion in the Southwest.

You'll like *all* Morton Foods. They give you "More Flavor—More for your Money Too." Look for Morton's today!

the best line of all . . . for a winning pantry



Miss Elsa Jean Holland, Rice Institute  
1954 Cotton Bowl Queen

SECURITY . . . STABILITY . . . SERVICE

# THE GIBRALTAR

LIFE INSURANCE COMPANY  
OF AMERICA

Old Line Legal Reserve

DALLAS, TEXAS



OUR HOME  
DALLAS, TEXAS

WILLIAM E. NETTLE  
*President*



Miss Barbara Joan Tatum, University of Alabama  
Miss Alabama of 1954 Cotton Bowl Game

**Now in Dallas . . .**

ALSONETT HOSPITALITY AT  
THE  
**HOTEL DALLAS**

(Formerly Jefferson Hotel)



Facing Ferris Park

***Air Conditioned***

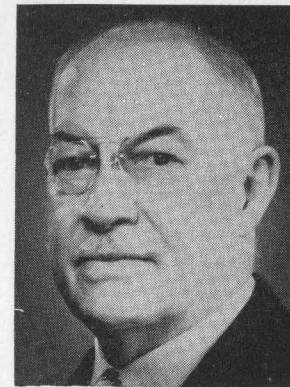
**"FAMOUS FOR FINE FOODS"**

Garage adjoining hotel

**E. K. CLARK, Mgr.**

**The Men Behind the Cotton Bowl**

UNIVERSITY OF ARKANSAS REPRESENTATIVES



T. H. BARTON

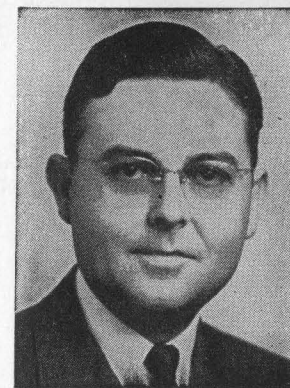


JAY W. DICKEY



BEN WOOTEN

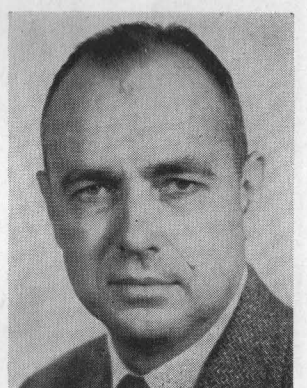
BAYLOR UNIVERSITY REPRESENTATIVES



E. COWDEN HENRY



LEONARD M. GREEN



FRANK LANGSTON

RICE INSTITUTE REPRESENTATIVES



OTTO EISENLOHR



G. L. HERMANCÉ



JACK LOWE

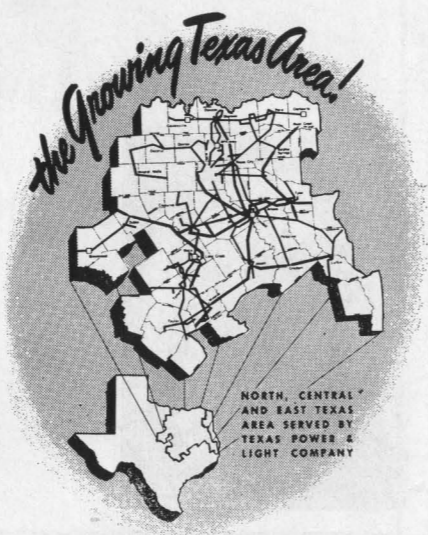


*Welcome, Neighbor!...*  
**TO THE "TEXAS BRIGHT SPOT"**

There are good reasons why more and more industries are finding a new future in the North, Central and East Texas area served by Texas Power & Light Company.

Here you will find low-cost plant sites with plenty of room to grow. It is the heart of a 24-billion-dollar-per-year market... a growing market that has shown an increase of 287 per cent in the past 10 years. It is an area which abounds with such advantages as nearby raw materials, intelligent native labor, excellent transportation facilities, ample low-cost power and fuel, low tax structure, mild climate, and a fine spirit of cooperation from city, county and state officials.

You are invited to use the services of our Industrial Development Department. We shall gladly furnish you, in confidence, all specific data you may need on this growing area. Write or wire the Industrial Development Department, Texas Power & Light Company, Dallas, Texas.



**TEXAS POWER & LIGHT COMPANY**

# The Men Behind the Cotton Bowl

## SOUTHERN METHODIST UNIVERSITY REPRESENTATIVES



JORDAN C. OWNBY



ROBERT B. CULLUM



HARLAN RAY

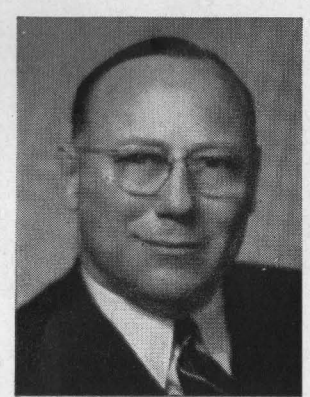
## UNIVERSITY OF TEXAS REPRESENTATIVES



J. C. THOMPSON



J. R. PARTEN

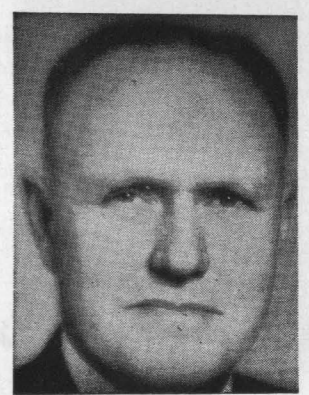


D. HAROLD BYRD

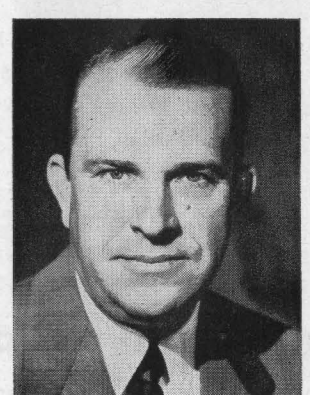
## TEXAS A. & M. REPRESENTATIVES



JOE UTAY



TYREE L. BELL



FELIX McKNIGHT



## *Less Than One Half of the* **TRINITY INDUSTRIAL DISTRICT** *Has Been Developed*

There are 1,200 acres in the Trinity Industrial District, of which only about 500 acres have been converted to industrial and business use, with paved streets, trackage, drainage and all utilities.

The undeveloped area, lying to the north and east of the present developed area and extending to Inwood-Hampton Boulevard, contains some 700 acres. It is destined to be a notable addition to industrial Dallas.

*A joint program is now under way to improve drainage facilities throughout the Levee District on both sides of the Trinity. Participants in this program are the City of Dallas, the Dallas County Flood Control District and the U. S. Army Engineers. This work will permit the development of the Trinity Industrial District to continue.*

### **Industrial Properties Corporation, Owners and Developers**

John M. Stemmons, President

L. Storey Stemmons, V.P. and General Manager

401 Republic Bank Bldg. • Dallas • Riverside 6552

## **The Men Behind the Cotton Bowl**

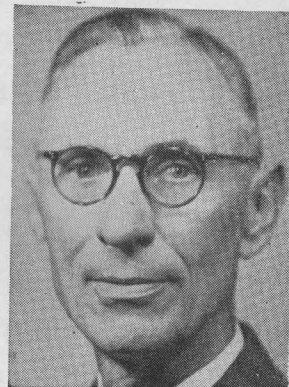
### **TEXAS CHRISTIAN REPRESENTATIVES**



ALTON CHERRY



AMON G. CARTER

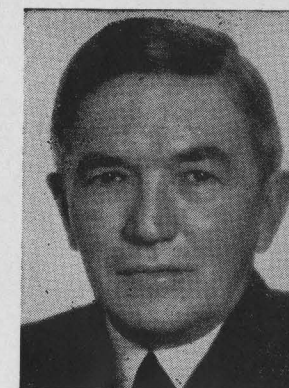


L. C. WRIGHT

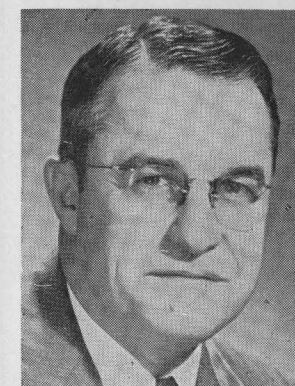
### **DIRECTORS AT LARGE**



FRED F. FLORENCE



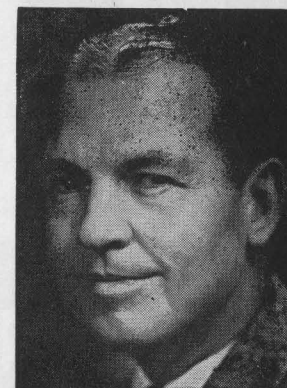
R. L. THORNTON



HOWARD GRUBBS



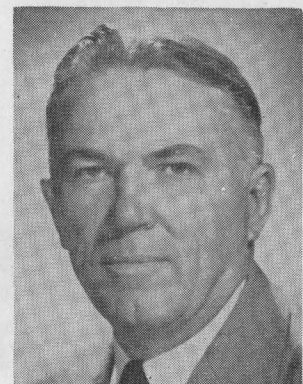
NATHAN ADAMS



JAKE L. HAMON



C. ANDRADE III



J. CURTIS SANFORD

# ALABAMA

## PROBABLE STARTING LINE-UP

No.	Name	Position
86	JOE CUMMINGS	LE
74	GEORGE MASON	LT
61	HARRY LEE	LG
50	RALPH CARRIGAN	C
66	CHARLES ECKERLY	RG
76	SID YOUNGELMAN	RT
84	BUD WILLIS	RE
10	BART STARR	QB
22	BOBBY LUNA	LH
34	CORKY THARP	RH
42	TOMMY LEWIS	FB

## THE ALABAMA SQUAD

10	Starr, QB	55	Ferrill, LT
11	Hill, QB	61	Lee, LG
12	Yates, QB	62	Davis, RG
14	Elmore, QB	63	Moorer, RG
16	Veazey, LG	64	Thomas, LG
20	Ingram, LH	65	Wilga, LG
21	McBride, LH	66	Eckerly, RG
22	Luna, LH	67	Collins, RG
23	Cassity, RH	68	Hannah, RG
24	Linville, LH	71	Ellett, RT
25	Cole, LH	72	Cunningham, LT
30	Watford, RH	73	Sington, RT
31	Hollis, RH	74	Mason, LT
32	Gearhart, RH	75	Smalley, RT
33	Oliver, RH	76	Youngelman, RT
34	Tharp, RH	77	Culpepper, RT
40	Conner, FB	78	Shipp, LT
41	Monnett, FB	80	Germanos, LE
42	Lewis, FB	81	Coyle, RE
43	Stone, FB	82	Lynch, RE
44	Malcolm, FB	83	Donaldson, RE
45	Cook, LE	84	Willis, RE
50	Carrigan, C	85	Tillman, LE
51	Brooks, C	86	Cummings, LE
53	Snoderly, C	87	Stewart, LE
54	DeLaurentis, C	88	Pritchett, RE

**CHESTERFIELD**  
*BEST FOR YOU*

*Choice of Young America*  
**CHESTERFIELD**



**FIRST**

WITH **PREMIUM QUALITY**

# RICE

## PROBABLE STARTING LINE-UP

No.	Name	Position
80	DAN HART	LE
78	RICHARD CHAPMAN	LT
70	JOHN HUDSON	LG
55	LEO RUCKA	C
60	KENNETH PAUL	RG
72	MAX SCHUEBEL	RT
89	BLOIS BRIDGES	RE
26	LEROY FENSTEMAKER	QB
47	DICKY MOEGLE	LH
36	GORDON KELLOGG	RH
45	DAVID "Kosse" JOHNSON	FB

## THE RICE SQUAD

10	Burk, RH	60	Paul, RG
11	Nesrsta, LH	61	Rayburn, RG
14	Laviage, LH	62	Lee, RG
19	Garbrecht, FB	63	Harpold, RG
21	Proctor, QB	67	Treadway, LG
23	Nisbet, QB	70	Hudson, LG
25	Grantham, QB	72	Schuebel, LT
26	Fenstemaker, QB	73	Cox, RT
31	Stone, RH	75	Golemon, RT
36	Kellogg, RH	77	Riviere, RT
40	Taylor, LH	78	Chapman, LT
42	Whittaker, FB	80	Hart, LE
43	Johnson, Carl, RH	82	Wortham, RE
45	Johnson, "Kosse", FB	84	Crawford, RE
47	Moegle, LH	85	Costa, RE
48	Rogers, RH	88	Ward, LE
54	Wilson, C	89	Bridges, RE
55	Rucka, C	90	Holland, LE
59	Lundstedt, C		

**CHESTERFIELD**  
*BEST FOR YOU*

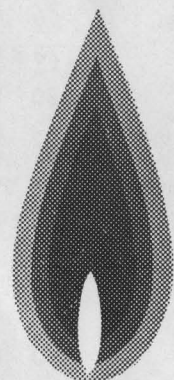
on the gridiron . . .  
 ..in the kitchen  
 it's **PERFORMANCE** that counts

The outstanding performance of an automatic gas range explains why more women cook with gas than all other fuels combined! Gas cooking is faster, better, cheaper . . . and it's modern!

There's no waiting for gas burners to heat . . . gas starts cooking your food instantly! Live flame broiling gives steaks and chops that flame-kissed flavor. Ventilated ovens bake light, luscious, evenly-browned cakes.

Yet gas ranges cost less to buy, feature for feature—cost less to operate—than any other modern range. And, of course, the modern automatic gas range has every feature for completely automatic cooking.

Enjoy the outstanding performance of a modern gas range in your home during 1954 and for years to come.

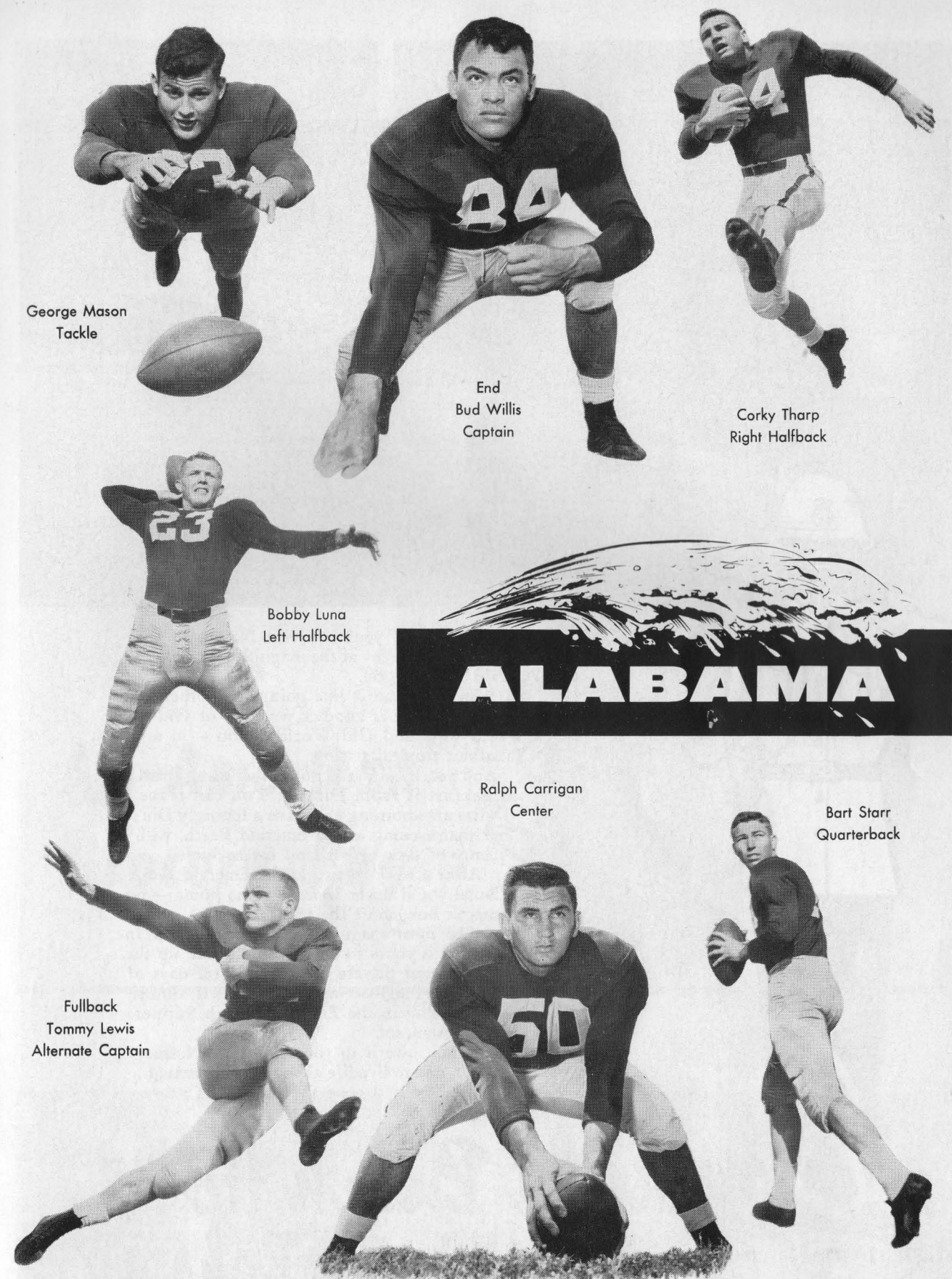


The year 1954 marks a quarter of a century of service in the Southwest by Southern Union Gas Company. Today, Southern Union supplies natural gas service to 60 towns and cities in Texas, New Mexico, Colorado and Arizona—serving more than 237,000 customers in the great and growing Southwest.

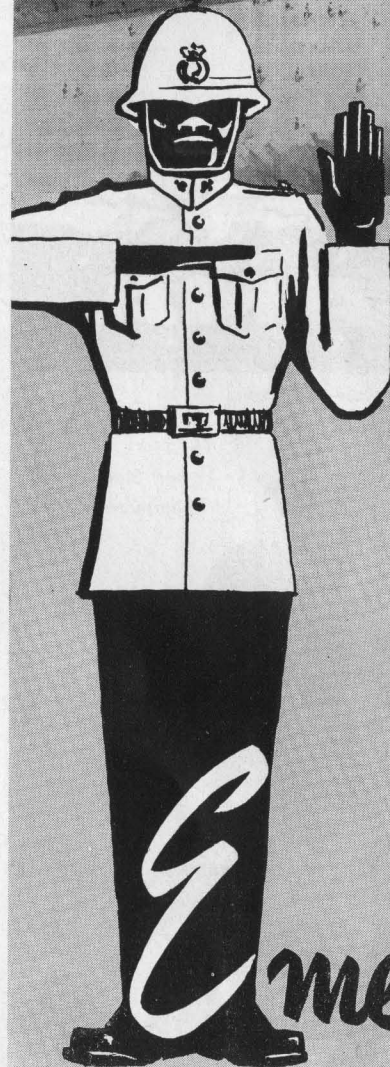
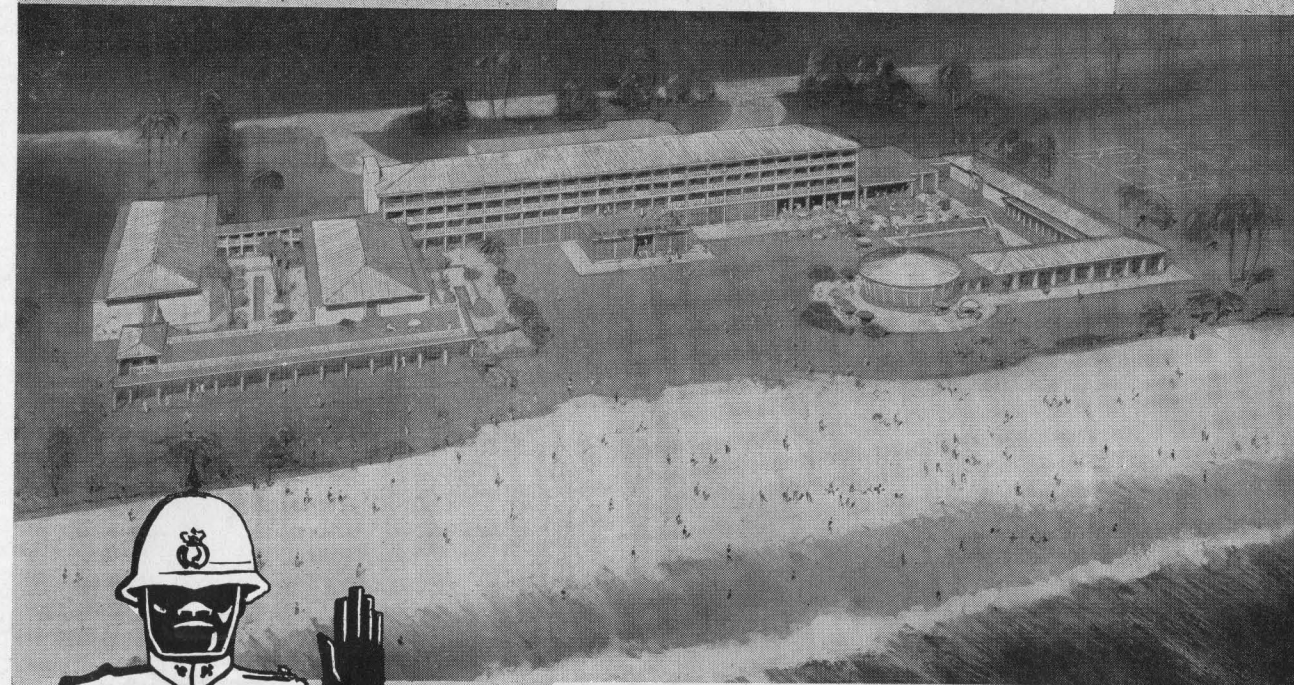
**Southern Union Gas**  
*Company*  
 HELPING BUILD THE GREAT SOUTHWEST

C. H. ZACHRY, President

Home Office: BURT BUILDING, DALLAS



Opening July 1



For the time of your life visit Nassau in The Bahamas and stay at the magnificent new Emerald Beach Hotel.

A trip to Nassau is like going to another world because it *is* another world — of Old World ways and Old World charm — in a luxuriant tropical setting.

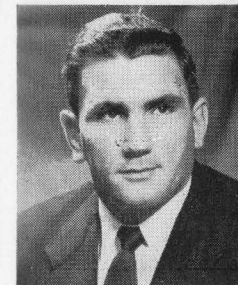
And yet, by air, it is no further away than Breakfast is from Dinner. You can leave Dallas any morning and have a leisurely Dinner that evening at the Emerald Beach, with plenty of time beforehand for cocktails.

After a week or two at the Emerald Beach Hotel you'll never want to come home — no matter how short the trip is.

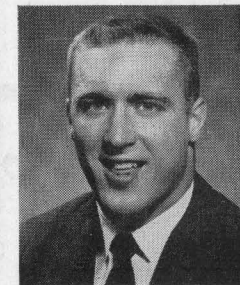
The most magnificent private beach in Nassau is yours to enjoy. You'll soak up the sun in your private cabana. Top off days of fascinating sightseeing with cocktails, dinner and dancing in the Emerald Beach Supper Club Restaurant.

Yes, you owe it to yourself to see Nassau this year, and to live life as you never dreamed it could be lived — at the luxurious new Emerald Beach Hotel.

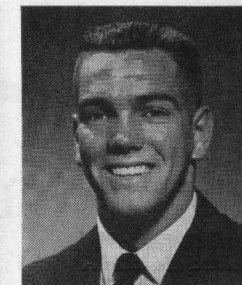
**Emerald Beach Hotel**  
**NASSAU in the Bahamas**



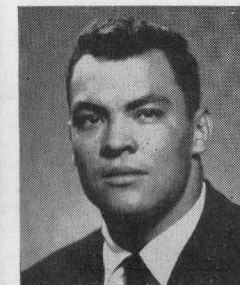
RALPH CARRIGAN  
Alabama Center



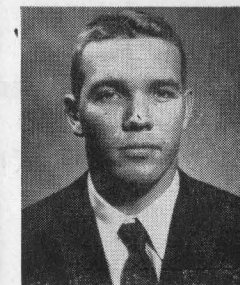
TOMMY LEWIS  
Alabama Back



CURTIS LYNCH  
Alabama End



BUD WILLIS  
Alabama End

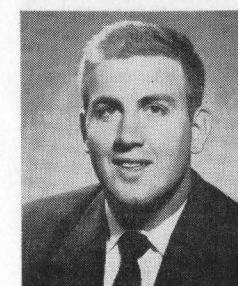


PETE COOK  
Alabama End

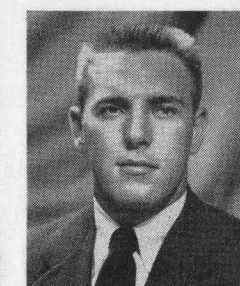
**TOM  
THUMB**

*the*

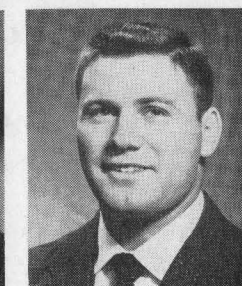
**All-American  
Grocery Boy**



BILLY SHIPP  
Alabama Tackle



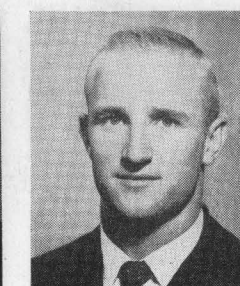
JIM DAVIS  
Alabama Guard



BILL STONE  
Alabama Back



JOHN McBRIDE  
Alabama Back



JOE CUMMINGS  
Alabama End

"The best of them all"

for  
thirst



for  
pleasure

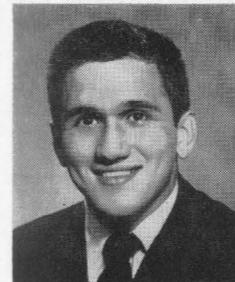
*Best Wishes from*

**OLDHAM LUMBER COMPANY**

*"NEXT DOOR TO THE FAIR GROUNDS"*

927 S. Haskell

TAylor 5194



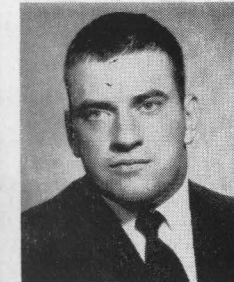
VINCE DE LAURENTIS  
Alabama Center



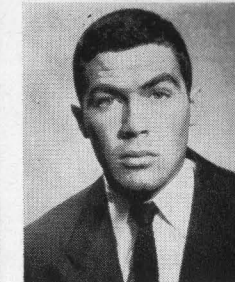
GEORGE MASON  
Alabama Tackle



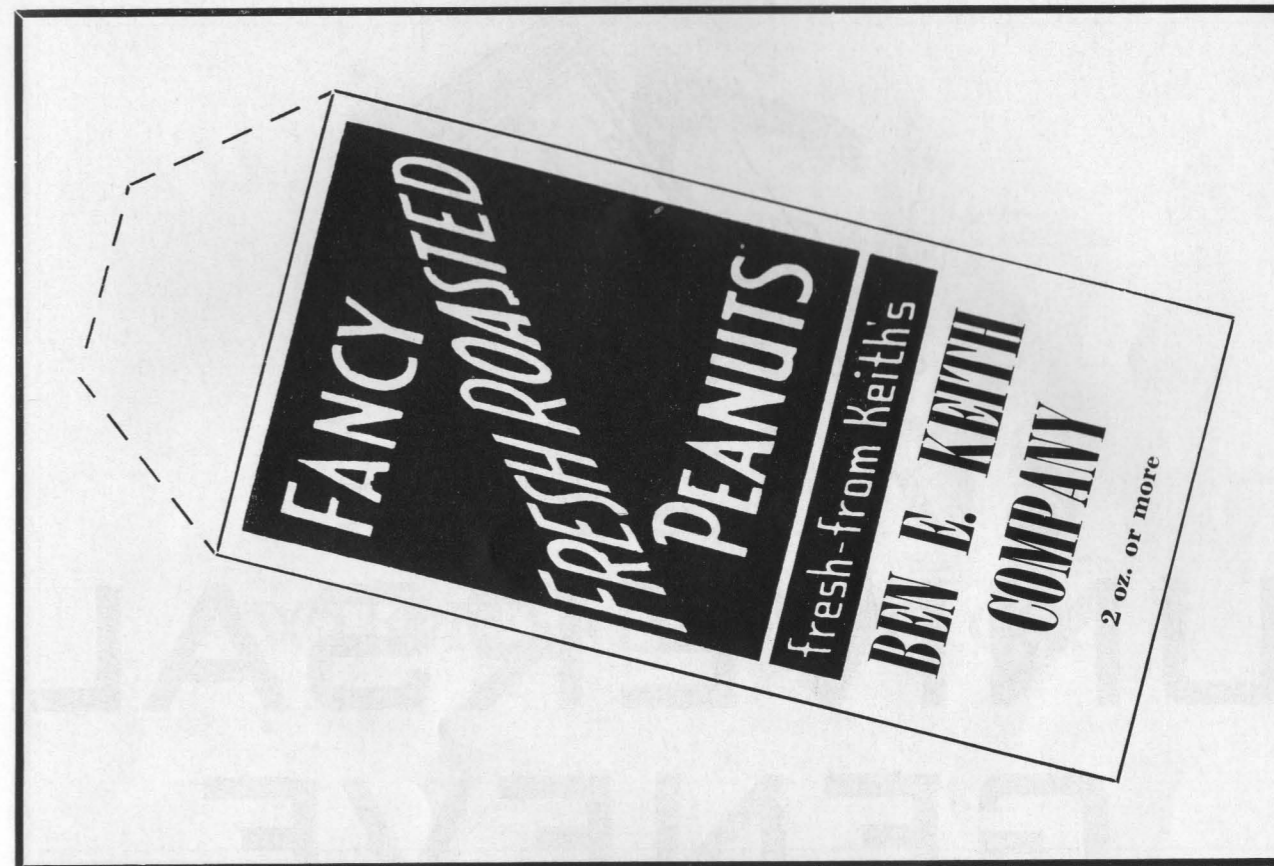
ED CULPEPPER  
Alabama Tackle



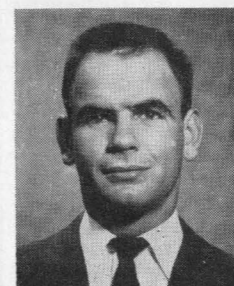
CHARLES ECKERLY  
Alabama Guard



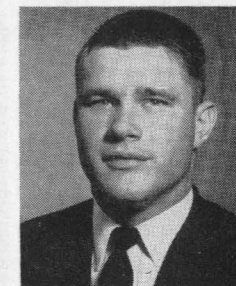
RUFUS CASSITY  
Alabama Back



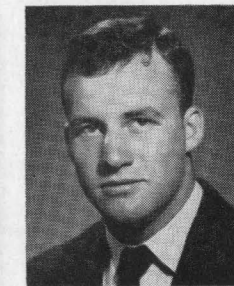
CECIL INGRAM  
Alabama Back



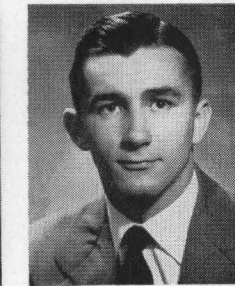
BUSTER HILL  
Alabama Back



TOMMY TILLMAN  
Alabama End



PAUL DONALDSON  
Alabama End



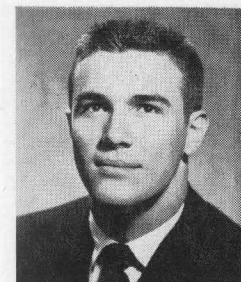
BILL HOLLIS  
Alabama Back



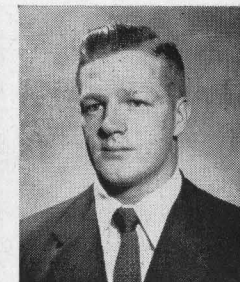
# UNIVERSAL GENEVE

The watch selected for conference gifts to the players in today's  
Cotton Bowl game

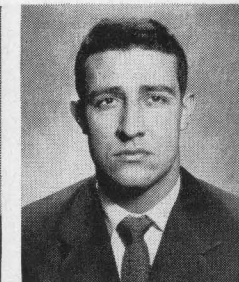
Universal Geneve watches are available at Neiman-Marcus



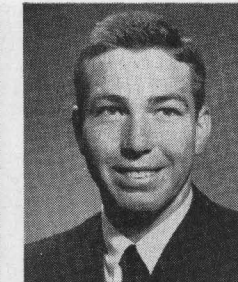
JOHN SNODERLY  
Alabama Center



CLIFTON COLLINS  
Alabama Guard



OSBIE LINVILLE  
Alabama Back



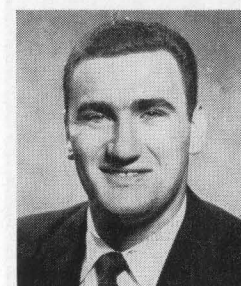
BART STARR  
Alabama Back



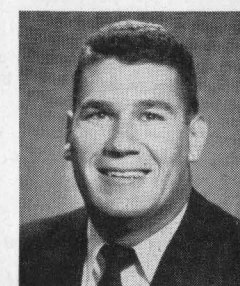
ALBERT ELMORE  
Alabama Back

*Welcome to Dallas*

## GLAZER'S WHOLESALE DRUG CO.



SID YOUNGELMAN  
Alabama Tackle



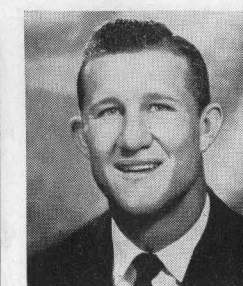
CHARLES MALCOLM  
Alabama Back



BOB WILGA  
Alabama Guard



JEFF MOORER  
Alabama Guard



BILL OLIVER  
Alabama Back

# MARCY LEE

*of Dallas*



*Marcy Lee's are  
featured in  
Charm, Glamour,  
Mademoiselle  
and Photoplay*

*Save the surface and you save all!*



#### HOME . . .

Beautify your home with color. Use Du Pont's gay pastels or enchanting deep flats inside and economical self-cleaning house paints outside.

#### AUTO . . .

Renew your car with sparkling Du Pont "Duco" or "Dulux" factory-matched colors. Du Pont Automotive Paints give added life and value to every car.

#### INDUSTRY . . .

Scientifically developed color schemes . . . protective and beautifying finishes for Manufacturers' products are but a few of Du Pont's varied services to industry.

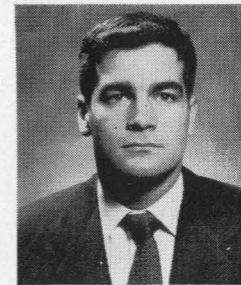
Du Pont Paint Chemists constantly strive to develop new paints . . . to raise current standards of quality. Get the product best suited to your needs . . . buy Du Pont Paints—For Every Purpose.

## E. I. du Pont de Nemours & Co., Inc.

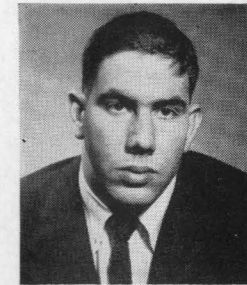
*Consult Your Classified Telephone Directory for Your Nearest Du Pont Paint Dealer*



NICK GERMANOS  
Alabama End



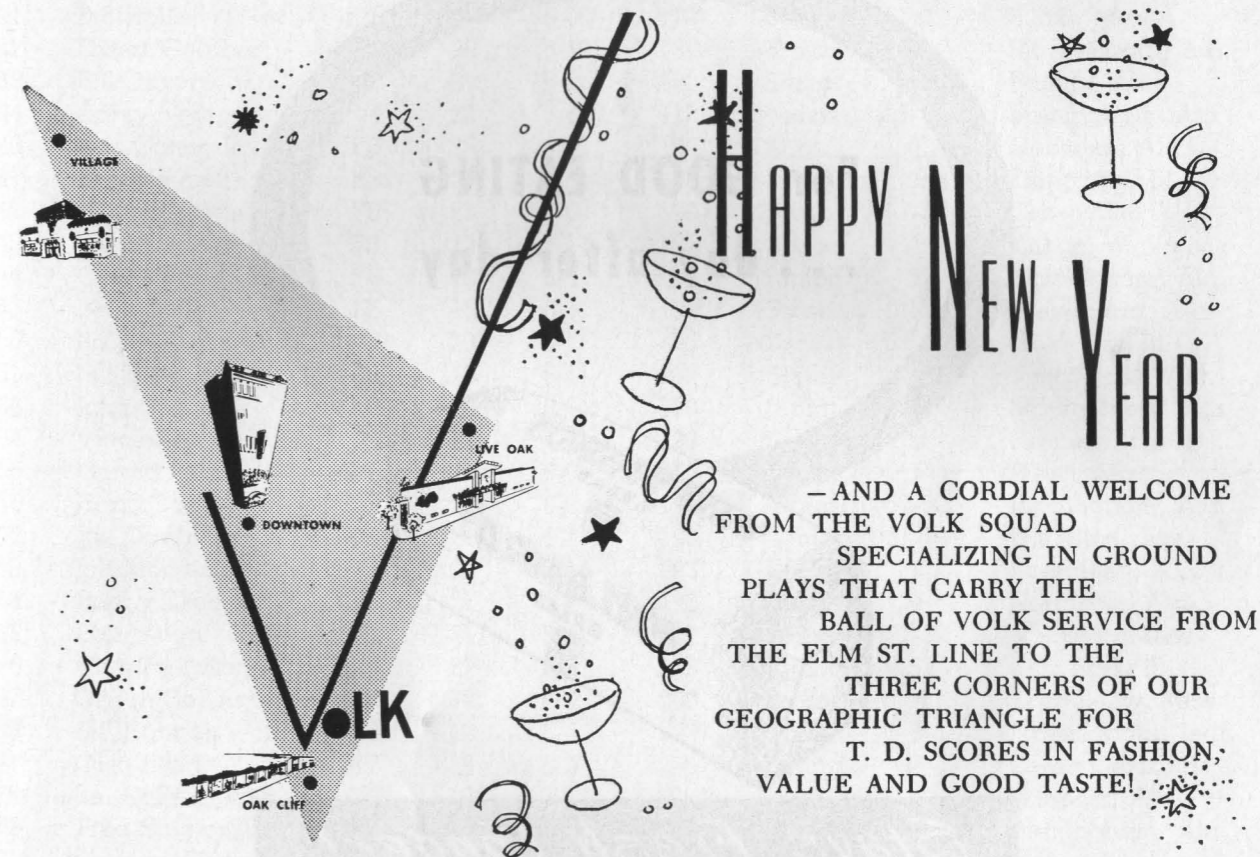
OLLIE YATES  
Alabama Back



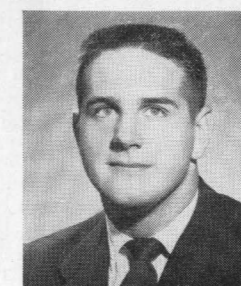
FRED SINGTON  
Alabama Tackle



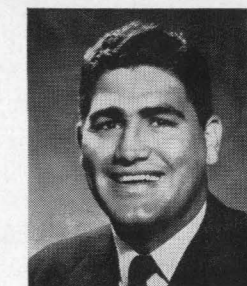
CORKY THARP  
Alabama Back



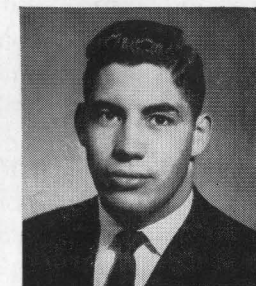
BOBBY LUNA  
Alabama Back



BILL BROOKS  
Alabama Center



JACK SMALLEY  
Alabama Tackle



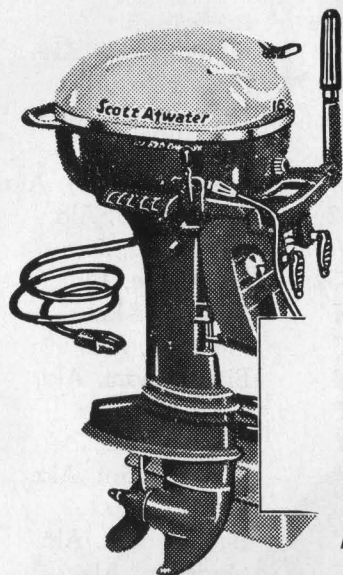
HARRY LEE  
Alabama Guard



## 1953 UNIVERSITY OF ALABAMA FOOTBALL ROSTER

No.	Name	Pos.	Age	Hgt.	Wgt.	Class	Letters	Home Town
10	Bart Starr	QB	19	6-0	180	Soph.	52	Montgomery, Ala.
11	Buster Hill	QB	22	6-0	155	Junior	52	Huntsville, Ala.
12	Ollie Yates	QB	18	6-1	185	Frosh	N	Hattiesburg, Miss.
14	Albert Elmore	QB	19	6-2	190	Soph.	F	Troy, Ala.
16	Louis Veazey	LG	20	6-0	190	Soph.	F	Alexander City, Ala.
20	Cecil Ingram	LH	20	5-11	170	Junior	52	Tuscaloosa, Ala.
21	John McBride	LH	20	6-1	170	Junior	V	Talladega, Ala.
22	Bobby Luna	LH	20	5-11	180	Junior	51-52	Huntsville, Ala.
23	Rufus Cassity	RH	19	5-10	165	Frosh	N	Atmore, Ala.
24	Osbie Linville	LH	19	6-1	180	Soph.	F	Florence, Ala.
25	Thornton Cole	LH	18	5-11	185	Frosh	N	Birmingham, Ala.
30	Troy Watford	RH	20	5-9	170	Soph.	F	Gadsden, Ala.
31	Bill Hollis	RH	20	5-10	170	Soph.	V	Biloxi, Miss.
32	Ernest Gearhart	RH	20	5-10	180	Frosh	N	Mt. Pleasant, Ala.
33	Bill Oliver	RH	21	6-1	180	Senior	52	Panola, Ala.
34	Corky Tharp	RH	22	5-10	170	Junior	51-52	Birmingham, Ala.
40	Don Connor	FB	19	5-11	190	Soph.	F	Gadsden, Ala.
41	Bob Monnett	FB	20	5-11	180	Junior	B	Effingham, Ill.
42	Tommy Lewis	FB	21	6-0	190	Senior	51-52	Greenville, Ala.
43	Bill Stone	FB	22	5-11	195	Soph.	F	Yukon, W. Va.
44	Charles Malcolm	FB	22	6-0	190	Junior	52	Birmingham, Ala.
45	Pete Cook	LE	18	6-1	190	Frosh	N	Alexandria, Ala.
50	Ralph Carrigan	C	23	5-11	195	Senior	51-52	Oak Park, Ill.
51	Bill Brooks	C	18	5-11	190	Soph.	F	Tuscaloosa, Ala.
53	John Snoderly	C	20	6-0	180	Junior	52	Montgomery, Ala.
54	Vince DeLaurentis	C	21	5-11	190	Senior	52	Hammonton, N. J.
55	Gerald Ferrill	LT	21	6-0	215	Soph.	F	Biloxi, Miss.
61	Harry Lee	LG	21	6-2	190	Junior	51-52	Birmingham, Ala.
62	Jim Davis	RG	21	6-1	190	Senior	51-52	Hamilton, Ala.
63	Jeff Moorner	RG	20	5-10	195	Junior	V	Evergreen, Ala.
64	Bobby Thomas	LG	21	5-11	190	Soph.	F	Northport, Ala.
65	Bob Wilga	LG	21	5-11	215	Senior	51-52	Webster, Mass.
66	Charles Eckerly	RG	22	5-8	215	Junior	52	Oak Park, Ill.
67	Clifton Collins	RG	18	6-0	200	Frosh	N	Yazoo City, Miss.
68	Bill Hannah	RG	19	6-0	198	Soph.	F	Indianapolis, Ind.
71	Olen Ellett	RT	19	6-2	230	Soph.	F	Owen Cross Rds., Ala.
72	Jim Cunningham	LT	19	6-2	195	Soph.	F	Winfield, Ala.
73	Fred Singleton, Jr.	RT	18	6-1	220	Frosh	N	Birmingham, Ala.
74	George Mason	LT	19	6-1	205	Junior	52	Langdale, Ala.
75	Jack Smalley	RT	21	6-3	215	Senior	51-52	Tuscaloosa, Ala.
76	Sid Youngelman	RT	20	6-3	215	Junior	52	Brooklyn, N. Y.
77	Ed Culpepper	RT	19	6-1	225	Junior	51-52	Bradenton, Fla.
78	Billy Shipp	LT	24	6-4	255	Senior	49-52	Mobile, Ala.
80	Nick Germanos	LE	19	5-11	185	Soph.	V	Montgomery, Ala.
81	Dan Coyle	RE	18	6-1	195	Frosh	N	Birmingham, Ala.
82	Curtis Lynch	RE	19	6-3	215	Soph.	V	Wadley, Ala.
83	Paul Donaldson	RE	20	6-2	182	Soph.	F	Floral, Ala.
84	Bud Willis	RE	22	6-0	185	Senior	51-52	Tifton, Ga.
85	Tom Tillman	LE	20	6-1	190	Soph.	52	Haleyville, Ala.
86	Joe Cummings	LE	20	6-2	185	Junior	52	Muleshoe, Texas
87	Tommy Stewart	LE	19	6-2	180	Junior	V	Gadsden, Ala.
88	James Pritchett	RE	20	6-0	190	Soph.	F	Birmingham, Ala.

(V—Varsity 1952 Season . . B—B Team 1952 Season . . N—New Frosh . . F—Up From Frosh Team)



SEE THE 1954 **SCOTT-ATWATER** WITH BAIL-A-MATIC

## 1954 SCOTT-ATWATER

THE MOST REVOLUTIONARY  
OUTBOARD MOTOR DEVELOP-  
MENT EVER CONCEIVED.

THE BIGGEST ARRAY OF POPU-  
LAR MOTOR FEATURES.

THE MOST COMPLETE LINE OF  
DE LUXE MODELS OFFERED BY  
ANY MANUFACTURER.

### It's the outboard that **BAILS YOUR BOAT!**

A WONDERFUL GIFT for the whole family! Just received is a limited shipment of new Scott-Atwater outboards . . . the sensational motors with *Bail-a-matic*, the most revolutionary outboard improvement in years.

*Bail-a-matic* pumps your boat dry, keeps it dry . . . automatically!

No more dipping, sponging, dumping, pumping—*Bail-a-matic* ends those laborious jobs forever.

You'll like the other features of the new Scott-Atwater, too: separate *Stowaway* Fuel Tank; Twist-Grip Speed Control; Carburetor Drain, many others. Scott-Atwater is 1954's big buy in outboards!

### At Your Dealers

#### PILLOWED POWER!

Resilient neoprene motor mounting isolates vibration, reduces noise, produces smoother ride.

#### COMPLETE SHIFT!

Forward, neutral, reverse at the flick of a lever. Enjoy the unequalled convenience of "cruiser control."

#### AQUABLADE LOWER UNIT!

Sleek, streamlined design develops new power efficiency, more speed, more miles per gallon.

#### STOWAWAY GAS TANK!

Clean, odorless tank holds enough gas for a whole day's cruising, stows conveniently under the seat.

#### TWIN GRIP SPEED CONTROL

Just twist the steering handle to control the complete speed range of your new Scott-Atwater!

**The Schoellkopf Co.**

DISTRIBUTOR

Dallas

Texas

## General American Oil Company of Texas



## Bell General Pipe Line Company

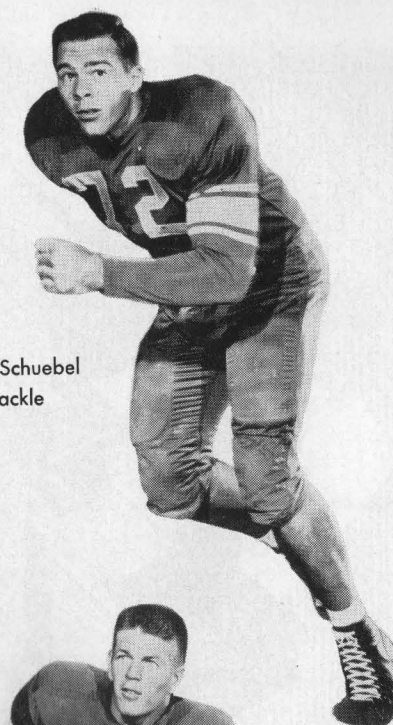
Republic Bank Building

Dallas, Texas

Dan Hart  
End



Max Schuebel  
Tackle



Tackle  
Richard Chapman  
Tri-Captain



Center  
Leo Rucka  
Tri-Captain



**RICE**



Fullback  
David  
"Kosse" Johnson  
All-American

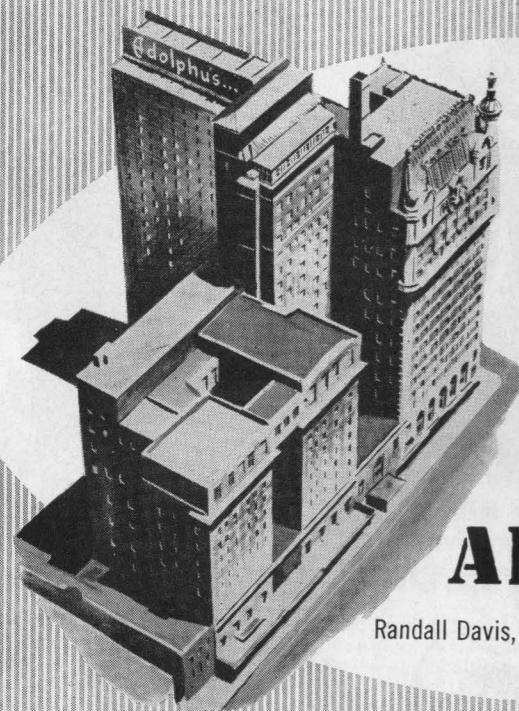
Guard  
John Hudson  
Tri-Captain



Kenneth Paul  
Guard



Dicky Moegle  
Halfback



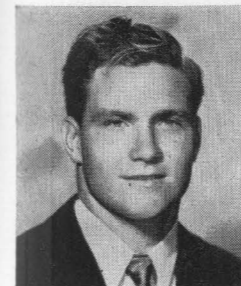
Business or pleasure in Dallas means The Adolphus. Complete air conditioning. 1,250 rooms with radio, many with TV. Motor Lobby. Coffee Shop. And for dining and dancing, the famous Century Room. Enjoy the best: Stay at The Adolphus.

## HOTEL ADOLPHUS

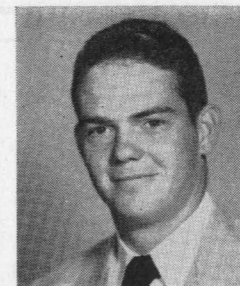
Randall Davis, Managing Director

Compliments of your  
**TEXACO DEALER**

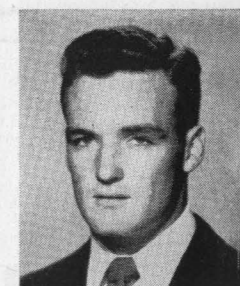
*The best friend your car ever had*



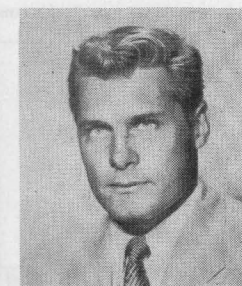
SAMMY WARD  
Rice End



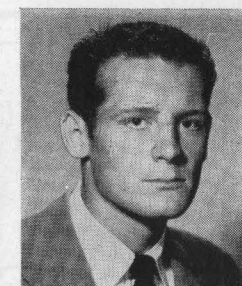
MARSHALL CRAWFORD  
Rice End



LAMOINE HOLLAND  
Rice End



BOB GARBRECHT  
Rice Back



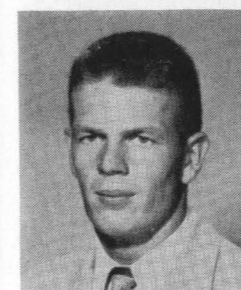
LAYTON GOLEMON  
Rice Tackle

**Welcome to the Cotton Bowl ~**

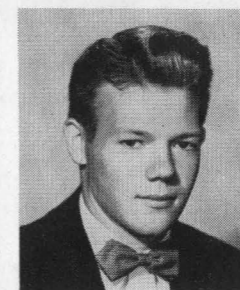
# HAPPY NEW YEAR

## OAK FARMS

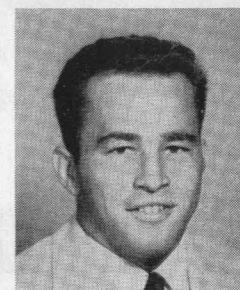
DAIRY  
PRODUCTS



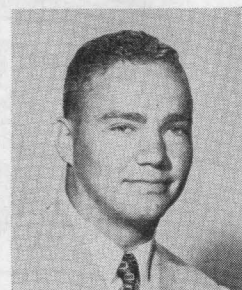
"KOSSE" JOHNSON  
Rice Back



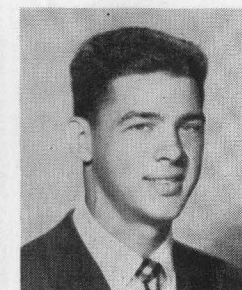
DICKY MOEGLE  
Rice Back



LEW HARPOLD  
Rice Guard



JOHN HUDSON  
Rice Guard



ATCHLEY PROCTOR  
Rice Back

# SEWELL MOTOR CO.

*"Dallas' Oldest Authorized LINCOLN-MERCURY DEALER"*

*The Lincoln-Mercury Center of Dallas*

**OWNED-AND-OPERATED-BY-THE-PEOPLE-WHO-LIVE-IN-TEXAS**

1715 N. Akard St., Just Off Ross

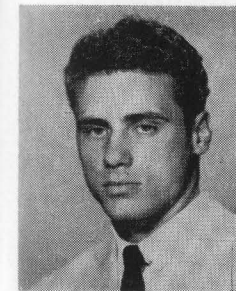
Phone Rlverside 6741

The *"Fresh Up"*  
Family Drink!



*You like it...  
it likes you*

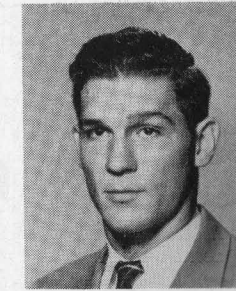
BUY A CASE TODAY!



DON COSTA  
Rice End



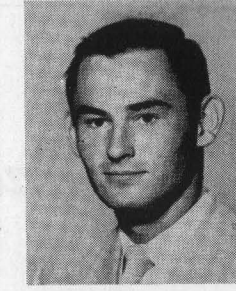
LA MAR LEE  
Rice Guard



R. E. WORTHAM  
Rice End



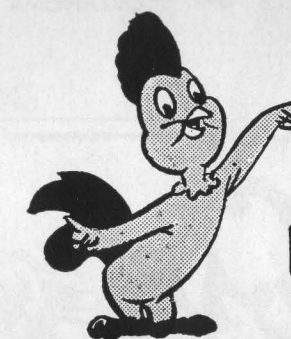
MORRIS STONE  
Rice Back



HORTON NESRSTA  
Rice Back

UNDER THIS SIGN YOU ENJOY  
THE MOST CONVENIENT  
SHOPPING IN TEXAS

WE'RE OPEN NOW  
AND TILL ELEVEN TONIGHT



7 A. M. Rooster

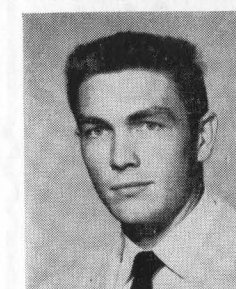


Look for Us  
On Television



11 P. M. Owl

STOP BY AFTER THE GAME  
And stock up for hospitality



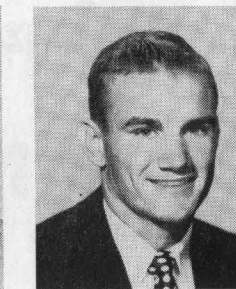
BLOIS BRIDGES  
Rice End



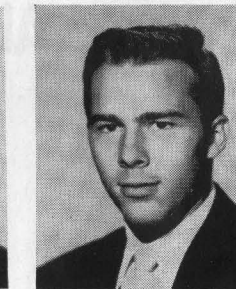
KENNETH PAUL  
Rice Guard



LEO RUCKA  
Rice Center



BUDDY GRANTHAM  
Rice Back



MAX SCHUEBEL  
Rice Tackle

*Greetings* COTTON BOWL FANS!

## TEXAS AUTOMATIC SPRINKLER CO.

(Established 1922)

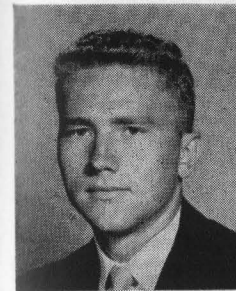
Phone Rlverside-9216

2330 SUMMER STREET

DALLAS, TEXAS

Branches in

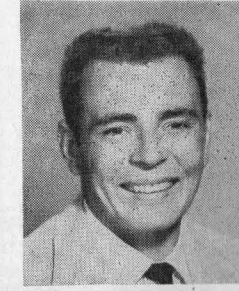
HOUSTON • SAN ANTONIO • MEMPHIS • NEW ORLEANS  
NORTH LITTLE ROCK • JACKSON, MISS. • OKLAHOMA CITY



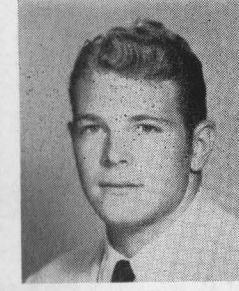
JOHN NISBET  
Rice Back



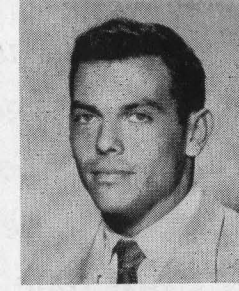
SAMMIE BURK  
Rice Back



EDDIE RAYBURN  
Rice Guard



PAGE ROGERS  
Rice Back

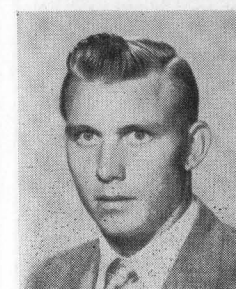


CARL JOHNSON  
Rice Back

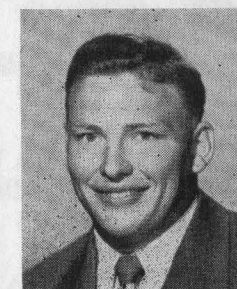
*We're* **INTERSTATE TRINITY**  
*in the*  
*Moving Business*

INTERSTATE TRINITY WAREHOUSE CO. RA-6151

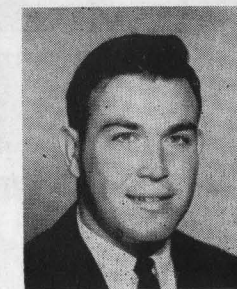
*Agents Allied Van Lines, Inc.*



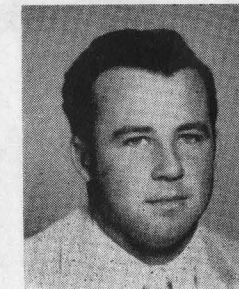
LEROY FENSTERMAKER  
Rice Back



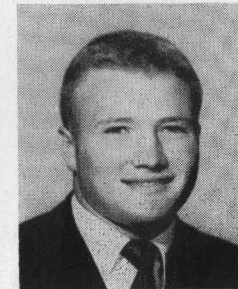
LA VON COX  
Rice Tackle



MAC TAYLOR  
Rice Back



JAY RIVIERE  
Rice Tackle



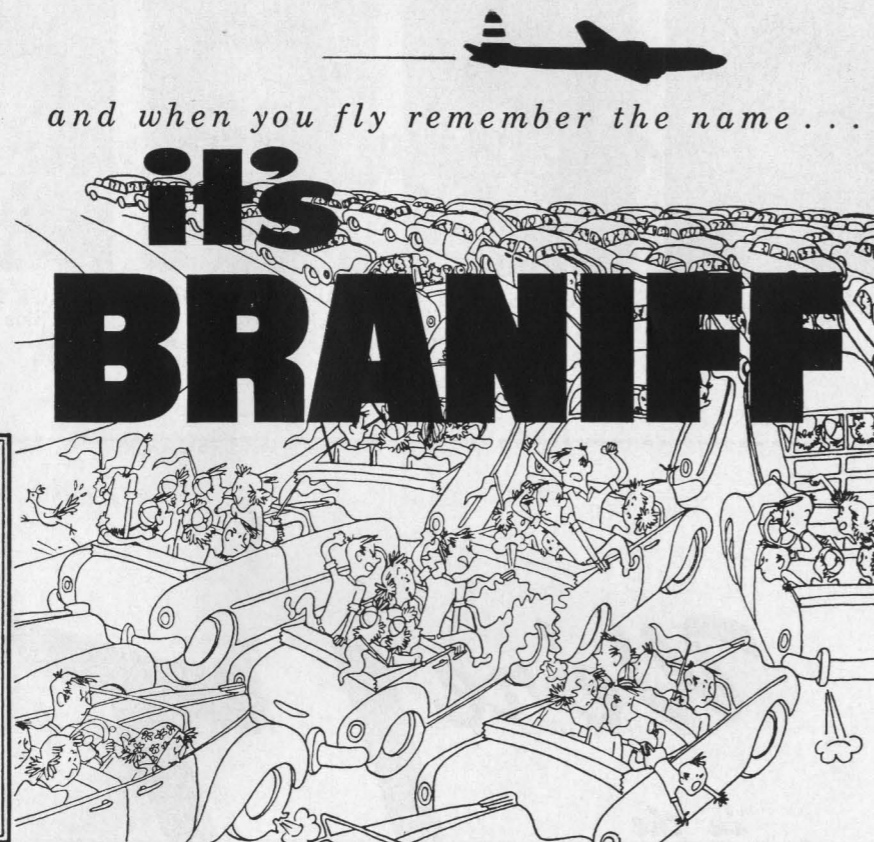
GORDON KELLOGG  
Rice Back

*The Highway  
Scrimmage  
makes Football  
seem tame!  
Next time Fly  
and enjoy  
the game—*

**Welcome to  
the Cotton Bowl**

Like the two fine teams performing for your pleasure today ...Braniff has completed another great year and has now flown over two billion passenger miles in complete safety.

**Braniff International Airways**  
Love Field, Dallas, Texas



**RICE and ALABAMA AGREE...**

*For light, light biscuits use*

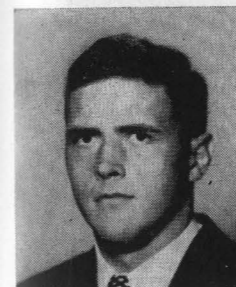
**LIGHT**

**CRUST**

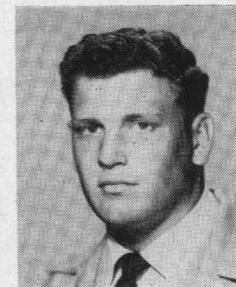
**FLOUR®**

*"The finest of fine flour"*

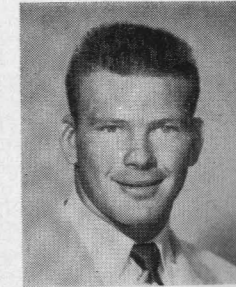
**BURRUS MILL & ELEVATOR COMPANY**



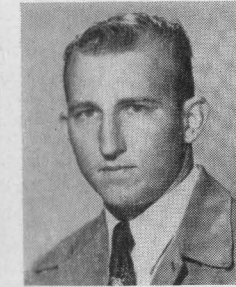
**RICHARD CHAPMAN**  
Rice Tackle



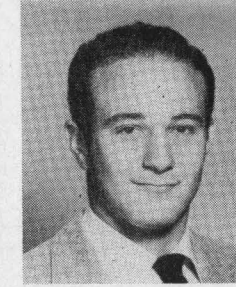
**DON WHITTAKER**  
Rice Back



**LARRY LUNDSTEDT**  
Rice Center



**W. C. TREADWAY**  
Rice Guard



**MENDEL LAVIAGE**  
Rice Back

*"Champions Since 1896"*

★ Solid line of over 26,000  
industrial products!

★ Backfield of over 11,000  
nationally known manufacturers!

★ No substitution for quality,  
service or assistance!



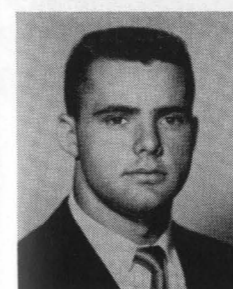
**BRIGGS ★ WEAVER**  
**MACHINERY COMPANY**

★ DALLAS — 5000 Hines Boulevard  
Phone: JU-0311

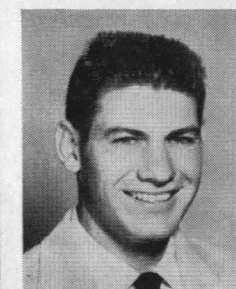
★ HOUSTON — 300 South 67th St.  
Phone: YU-3361

★ FT. WORTH — 222 No. University Dr.  
Phone: FO-5621

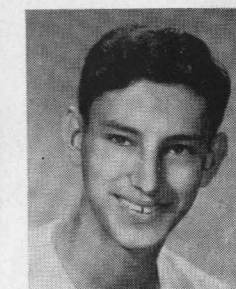
Distributors of Industrial Machinery • Supplies • Tools • Equipment  
Engineering Services for Water Systems • Material Handling • Transmission Machine Tools • Air Controls



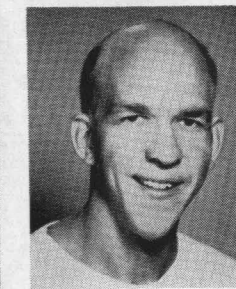
**DAN HART**  
Rice End



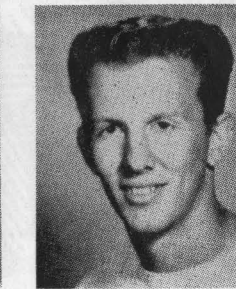
**DON WILSON**  
Rice Center



**LOUIS LOESER**  
Ass't. Trainer

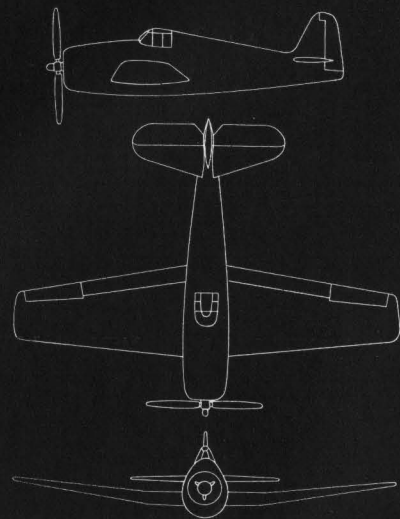


**BILL DAVIS**  
Rice Student Manager

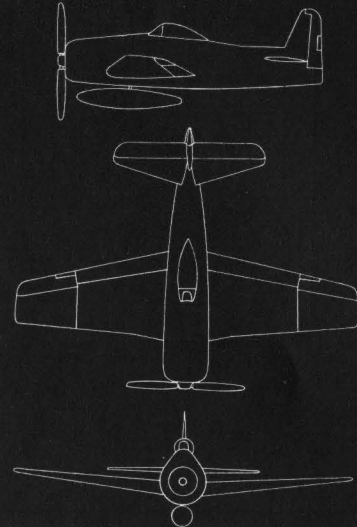


**JOHN WOLDA**  
Rice Student Manager

HELLCAT

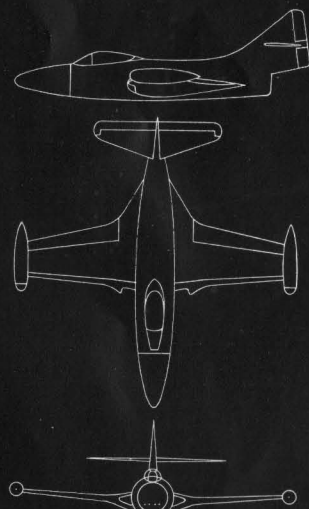


BEARCAT

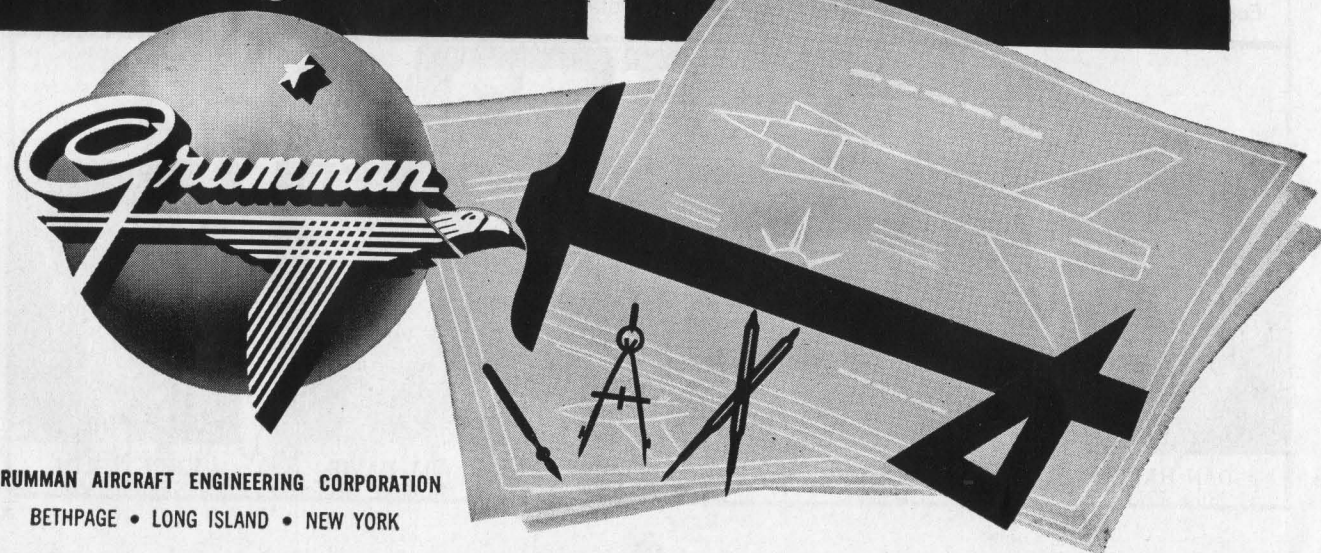
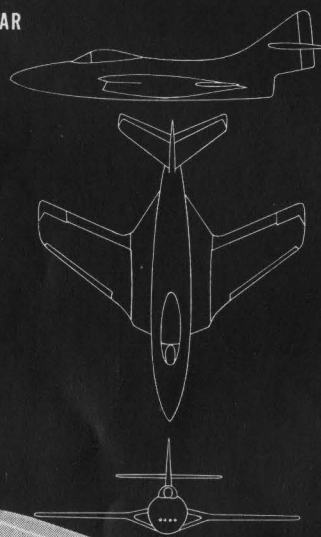


*"The name Grumman on a plane  
is like 'Sterling' on Silver"* ... Vice Admiral John C. McCain, U.S.N.

PANTHER



COUGAR



GRUMMAN AIRCRAFT ENGINEERING CORPORATION  
BETHPAGE • LONG ISLAND • NEW YORK

## 1953 RICE INSTITUTE OWLS VARSITY FOOTBALL ROSTER

No.	Name	Pos.	Wt.	Ht.	Age	Class	Exp.	Home Town
10	Sammie Burk	RH	190	6-0	21	Junior	1 VL	Luling
11	Horton Nesrsta	LH	147	5-9	22	Senior	2 VL	San Antonio
14	Mendel Laviage	LH	180	5-7	19	Soph.	FL	Houston
19	Bob Garbrecht	FB	200	6-1	20	Soph.	1 VL	New York City, N. Y.
21	Atchley Proctor	QB	170	6-0	19	Junior	1 Sq.	DeKalb
23	John "Pinky" Nisbet	QB	185	6-1	20	Soph.	FL	Houston
25	Buddy Grantham	QB	178	6-3	20	Senior	2 Sq.	Grand Prairie
26	Leroy Fenstermaker	QB	195	6-2	21	Senior	1 VL	Llano
31	Morris Stone	RH	167	5-9	20	Junior	1 VL	Kerrville
36	Gordon Kellogg	RH	171	5-10	20	Junior	1 VL	Baytown
40	Mac Taylor	LH	180	5-10	20	Soph.	1 Sq.	Lubbock
42	Don Whittaker	FB	192	6-1	21	Senior	1 VL	Dallas
43	Carl Johnson	RH	177	6-0	20	Senior	1 VL	Houston
45	David "Kosse" Johnson	FB	178	6-0	21	Senior	2 VL	Baytown
47	Dicky Moegle	LH	167	6-0	19	Junior	1 Sq.	Taylor
48	Page Rogers	RH	190	6-0	20	Soph.	FL	Houston
54	Don Wilson	C	210	6-3	19	Soph.	FL	Houston
55	Leo Rucka	C	204	6-3	22	Senior	2 VL	Crosby
59	Larry Lundstedt	C	188	5-11	20	Junior	1 Sq.	Austin
60	Kenneth Paul	RG	195	5-11	20	Junior	1 VL	Houston
61	Eddie Rayburn	RG	220	6-2	19	Soph.	FL	Houston
62	LaMar "Skip" Lee	RG	205	6-0	21	Senior	1 VL	Huntsville
63	Lew Harpold	RG	198	5-10	20	Soph.	1 Sq.	Houston
67	W. C. Treadway	LG	200	6-1	21	Senior	2 VL	Houston
70	John Hudson	LG	212	6-0	20	Senior	2 VL	Center
72	Max Schuebel	LT	210	6-2	21	Senior	2 VL	Houston
73	LaVon Cox	RT	235	6-2	20	Junior	1 Sq.	Galena Park
75	Layton Golemon	RT	230	6-4	19	Junior	1 VL	Kerrville
77	Jay Riviere	RT	200	6-0	20	Soph.	1 Sq.	Houston
78	Richard Chapman	LT	225	6-6	20	Senior	2 VL	Waxahachie
80	Dan Hart	LE	195	5-10	21	Senior	2 VL	Houston
82	R. E. Wortham	RE	185	5-11	20	Junior	1 Sq.	Klein
84	Marshall Crawford	RE	184	6-2	19	Soph.	FL	Lamesa
85	Don Costa	RE	194	6-0	20	Junior	1 Sq.	Houston
88	Sammy Ward	LE	190	6-0	21	Senior	1 FL	Laredo
89	Blois Bridges	RE	187	6-1	21	Senior	1 VL	Grand Prairie
90	Lamoine Holland	LE	180	6-2	20	Junior	1 Sq.	San Antonio

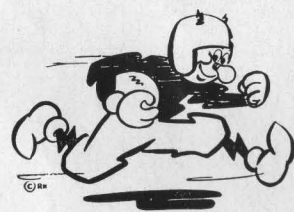


**Welcome to Dallas,  
FOOTBALL FANS**

Make your visit complete by dining and dancing at the nationally famous Mural Room this evening. Excellent food, famous orchestras and sparkling floor show nightly except Sunday.

**Mural Room**

**BAKER HOTEL**  
AN AFFILIATED NATIONAL HOTEL  
Fenton J. Baker, Manager



## Carrying the ball— On the Panhandle-Plains!

And what a ball carrying job Reddy Kilowatt has done!

The last decade has seen the population of his Southwestern Public Service Company territory increase by more than 75%, and yet there has always been plenty of electric power for the homes, farms and industries in this 45,000 square mile area.

There's power on the Panhandle-Plains. Reddy Kilowatt Power.



## COTTON BOWL ALL-STARS

### ALL-TIME COTTON BOWL SELECTIONS

#### ENDS:

Holt Rast (Alabama) 1942  
James Williams (Rice) 1950

#### TACKLES:

Jim Kekeris (Missouri) 1946  
Martin Ruby (Texas A&M) 1942 and (Randolph Field) 1944

#### GUARDS:

Charles Henke (Texas A&M) 1941  
Jack Freeman (Texas) 1943

#### CENTER:

Ki Aldrich (TCU) 1937

#### QUARTERBACK:

Sammy Baugh (TCU) 1937

#### HALFBACKS:

Bobby Layne (Texas) 1946  
Glenn Dobbs (Randolph Field) 1944

#### FULLBACK:

John Kimbrough (Texas A&M) 1941

GUARDS—Harvey Hardy (Georgia Tech) 1943; Steve Suhey (Penn State) 1948; Bud McFadin (Texas) 1951; Ray Correll (Kentucky) 1952; and Harley Sewell (Texas) 1953.

CENTERS—Jerry Dowd (St. Marys) 1939; Lou DeFilippo (Fordham) 1941; Brad Ecklund (Oregon) 1949; Joe Watson (Rice) 1950; and Keith Flowers (TCU) 1952.

BACKS—Ernie Lain (Rice) 1938; Elmer Tarbox (Texas Tech) 1939; Banks McFadden (Clemson) 1940; Jimmy Nelson (Alabama) 1942; Roy McKay (Texas) 1943; Bob Fenimore (Oklahoma A&M) 1945; Byron White (Colorado) 1938; Y. A. Tittle (LSU) 1947; Doak Walker (SMU) 1948 and 1949; Kyle Rote (SMU) 1949; Norm Van Brocklin (Oregon) 1949; Billy Burkhalter (Rice) 1950; Hank Lauricella (Tennessee) 1951; Andy Kozar (Tennessee) 1951; Babe Parilli (Kentucky) 1952; Emery Clark (Kentucky) 1952; Richard Ochoa (Texas) 1953; and Bob Griesbach (Tennessee) 1953.

### METHOD OF SELECTION

The outstanding players of each Cotton Bowl Classic are selected by a poll of the working press covering that game. Results of this ballot are announced following the game, and the complete breakdown of votes is passed to a Cotton Bowl Committee which evaluates the performances in comparison with those of past games to determine whether performance is worthy of placement on the All-Time Team or Honorable Mention list. The Cotton Bowl Committee is composed of the Sports Editors of the Associated Press, Dallas Morning News, Dallas Times Herald, International News Service and United Press.

### HONORABLE MENTION

ENDS—L. D. Meyer (TCU) 1937; Joe Parker (Texas) 1944; Neil Armstrong (Oklahoma A&M) 1945; Jack Marshall (Georgia Tech) 1943; Alton Baldwin (Arkansas) 1947; Hubert Bechtol (Texas) 1946; and Horace Sherrod (Tennessee) 1951.

TACKLES—Don Whitmire (Alabama) 1942; Stanley Mauldin (Texas) 1943; Ralph Foster (Oklahoma A&M) 1945; Joe Ungerer (Fordham) 1941; Joe Routt (Texas A&M) 1941.

*Compliments of*

**AMERICAN LIBERTY OIL COMPANY**

Toddie Lee Wynne

# MELROSE HOTEL

Home of the

## COTTON BOWL TEAMS

3015 Oak Lawn Avenue

Lakeside 5151

© 1953 THE FRITO CO.

Pass the



for a perfect snack time score

# COHEN CANDY COMPANY

Wholesale Distributors of

## SCHRAFFT'S AND BRACH CANDIES

Riverside 6426

1201 North Industrial

Candy  
Cigars  
Cigarettes  
Tobaccos

School Supplies  
Box Candies  
Fountain Supplies  
Novelties

## THE PRE-GAME SHOW

1. Band Concert from 11:45 a.m. to 12:30 p.m. by high school bands and Kilgore College Ranger Band.
2. Presentation of Cotton Bowl Queen and Princesses—Coronation of 1954 Cotton Bowl Queen: Elsa Jean Holland, The Rice Institute. Princesses: Marilyn Burns, Baylor University; Jane McBrierty (TSCW), Texas A&M; Jimmie Lou Anderson, University of Arkansas; Pat McGinn, University of Texas; Peggy Dyche, Texas Christian University; Ann Roach, Southern Methodist University; and Barbara Tatum, "Miss Alabama" of the 1954 Cotton Bowl Game.
3. Field Performance of The Rice Institute Band.
4. Presentation of the Southwest Conference Sportsmanship Award.
5. Entrance of the University of Alabama Band.
6. Toss of the coin.
7. Invocation.
8. Playing of the National Anthem.
9. Introduction of Alabama players.
10. Playing of Alabama Alma Mater.
11. Introduction of Rice players.
12. Playing of Rice Alma Mater.

Entertainment on Fair Grounds prior to game is sponsored by Dallas Cotton Exchange, Texas Cotton Association and Texas Cotton Ginners Association. Cotton was donated by W. D. Felder & Company. Drayage by Farmers & Merchants Compress & Warehouse Co.

The 1954 Cotton Bowl game is being carried by the National Broadcasting Company over its coast-to-coast radio network. Curt Gowdy is doing the play-by-play coverage, with Joe Hasel handling the color.

NBC is also telecasting the 1954 Cotton Bowl game over its television network in a "live" telecast. Lindsey Nelson is the play-by-play announcer, with Harold "Red" Grange working the color assignment.

The Texas Company is sponsoring both the broadcast and the telecast of this year's Cotton Bowl game.

*Best Wishes for a*  
**HAPPY NEW YEAR**  
 AND A GREAT GAME

Harold Byrd

Tower Petroleum Bldg.

Dallas, Texas

Make this your  
**HEADQUARTERS**

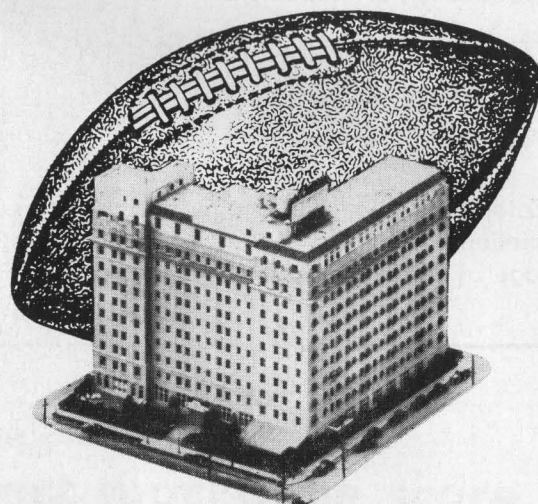
...every time you visit  
 Dallas for the big games.

Quiet ... Convenient ... Comfortable

**Stoneleigh Hotel**

DALLAS

TEXAS

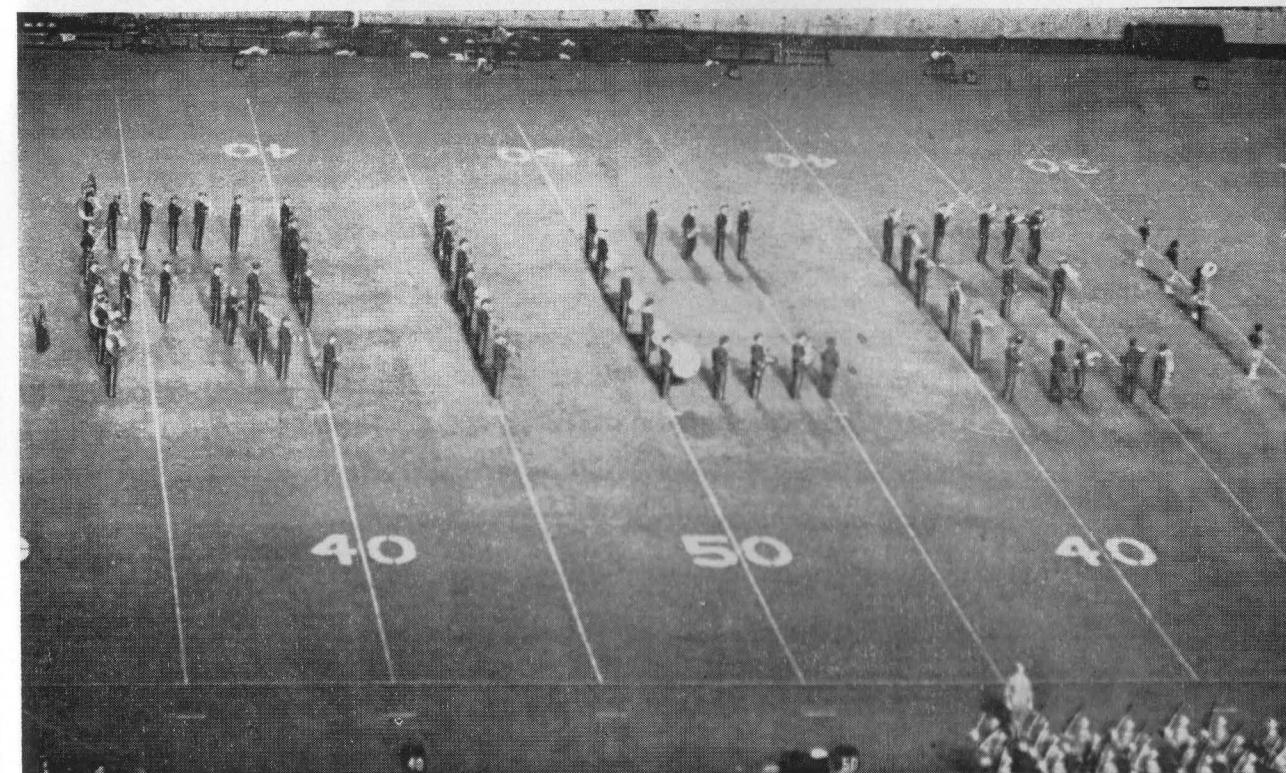


**FLOYD WEST and CO.**

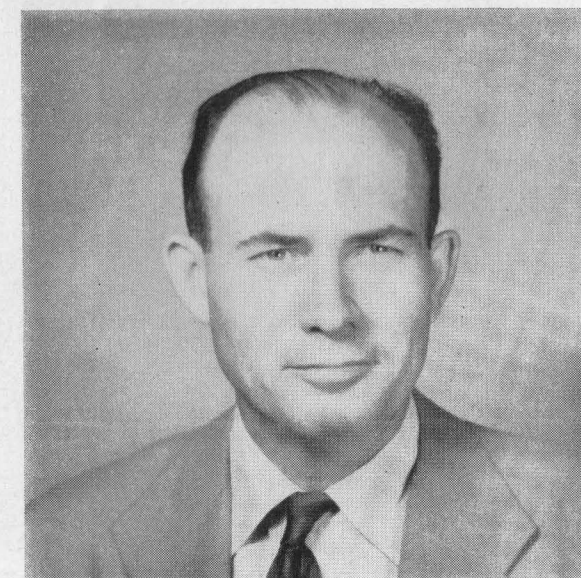
INSURANCE MANAGERS  
 AND GENERAL AGENTS

2103 Bryan Street • Telephone RA-9391 • Dallas

**THE PRE-GAME STARS**



THE RICE INSTITUTE MARCHING BAND



M. H. McNEELY, Director

# LINEUP FOR BETWEEN HALVES SHOW

## THE PARTICIPATING ORGANIZATIONS

University of Alabama "Million Dollar" Band, Tuscaloosa, Ala.

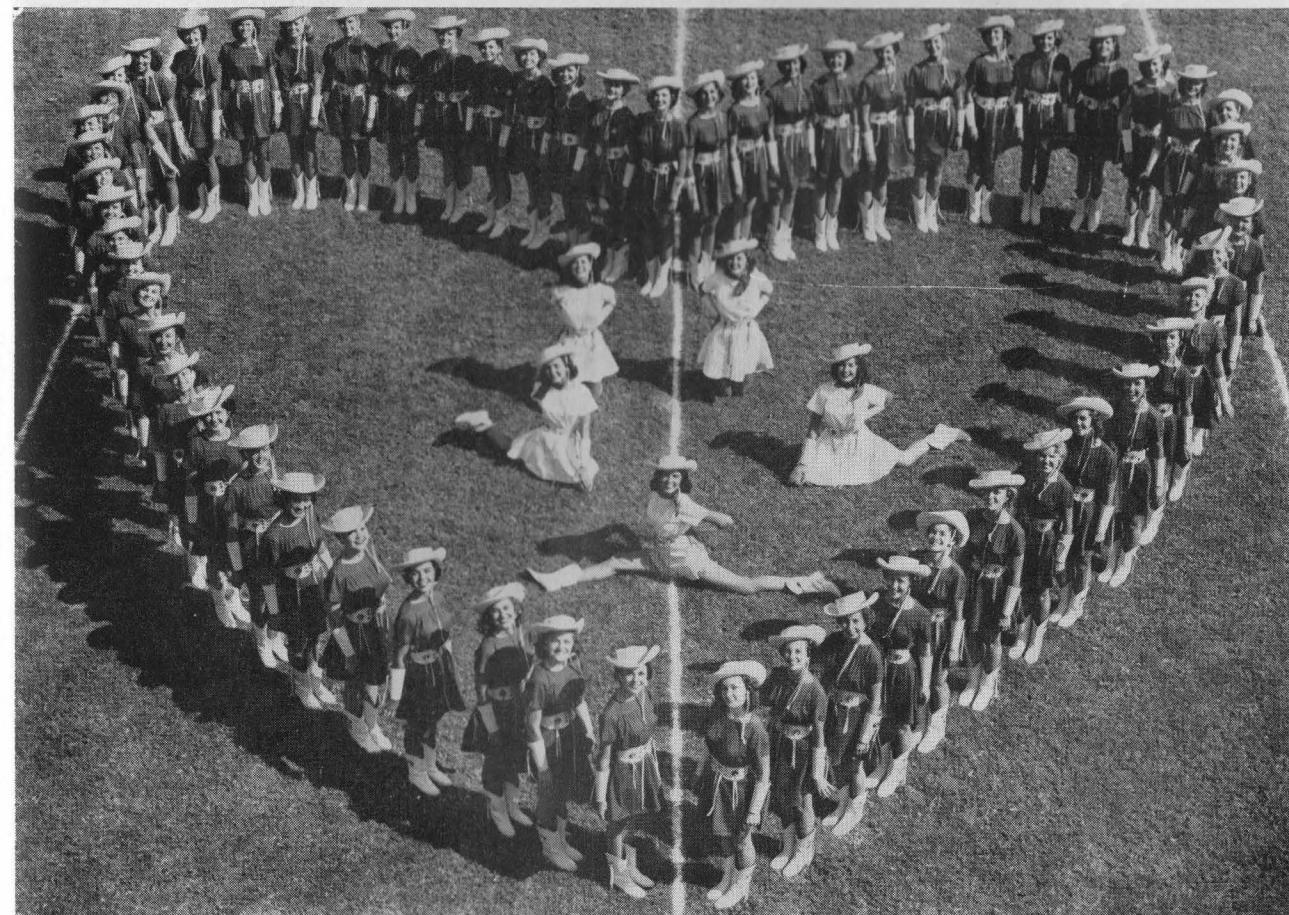
Beaumont High School Band, Beaumont, Texas	Refugio High School Band, Refugio, Texas
Center High School Band, Center, Texas	Texarkana High School Band, Texarkana, Texas
Kermit High School Band, Kermit, Texas	Kilgore College Ranger Band, Kilgore, Texas
Rangerettes, Kilgore College, Kilgore, Texas	

CONDUCTOR OF HALF-TIME MUSIC: Ed Lumpkin, Greggton, Texas

## THE PRODUCTION LINEUP

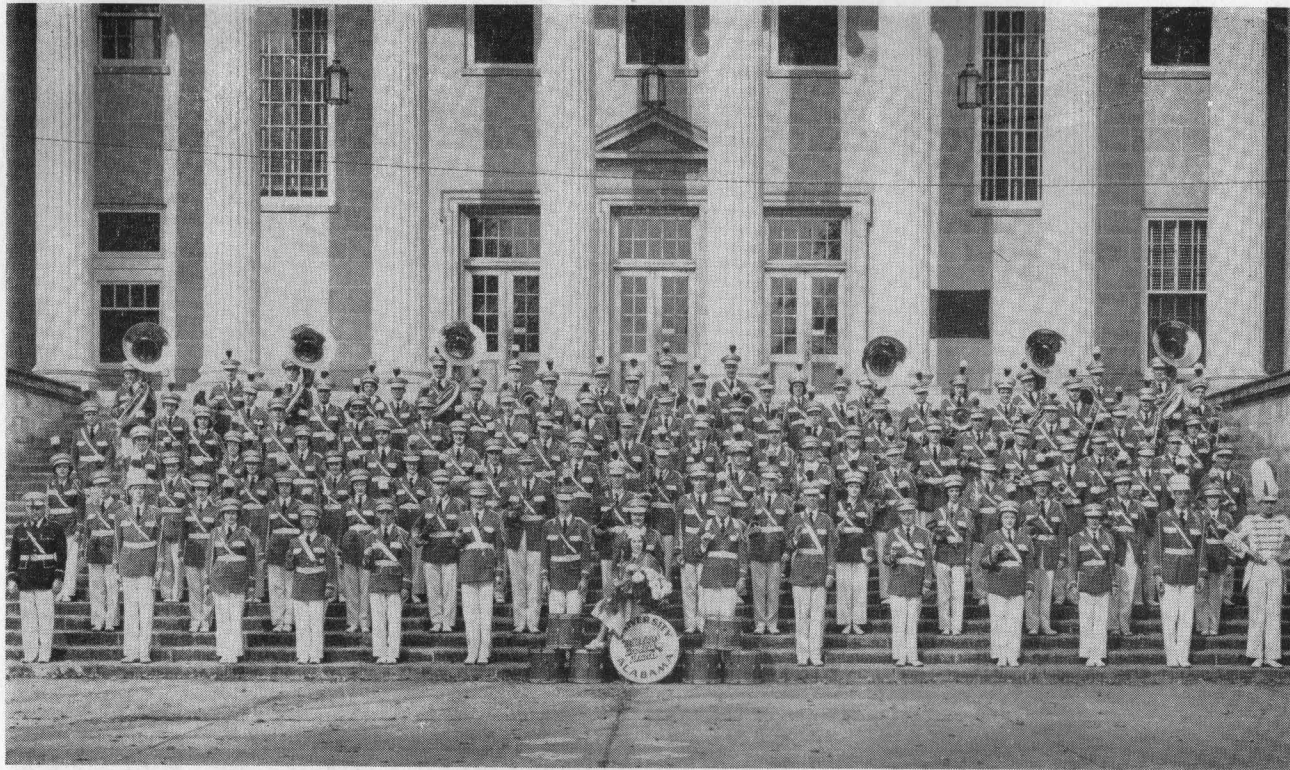
Act	Organization	Formation	Music
1.	University of Alabama Band	Military Drill Letter Formation  Dance Routine Dixie Oh! Half-time Score Texas	"Glorie" "Yea! Alabama" "Old Grey Bonnet" "Ravel's Bolero" "Dixie" "Oh!" ? "Texas, Our Texas"
2.	High School Bands	Fanfare	"America The Beautiful"
3.	High School Bands	Children	"London Bridge" "Mary Had A Little Lamb" "Farmer In The Dell"
4.	High School Bands	Industry	"Whistle While You Work"
5.	Rangerettes Ranger Band	American Heritage—Then and Now	"Johnson Rag"
6.	High School Bands	Sports	"World Events"
7.	High School Bands Rangerettes	Military	"Stars And Stripes Forever"

## HALF-TIME STARS



KILGORE COLLEGE RANGERETTES, KILGORE, TEXAS  
GUSSIE NELL DAVIS, Director      DENARD HADEN, Choreographer

## HALF-TIME STARS



UNIVERSITY OF ALABAMA'S MILLION DOLLAR BAND



COL. CARLETON K. BUTLER  
Director, Million Dollar Band

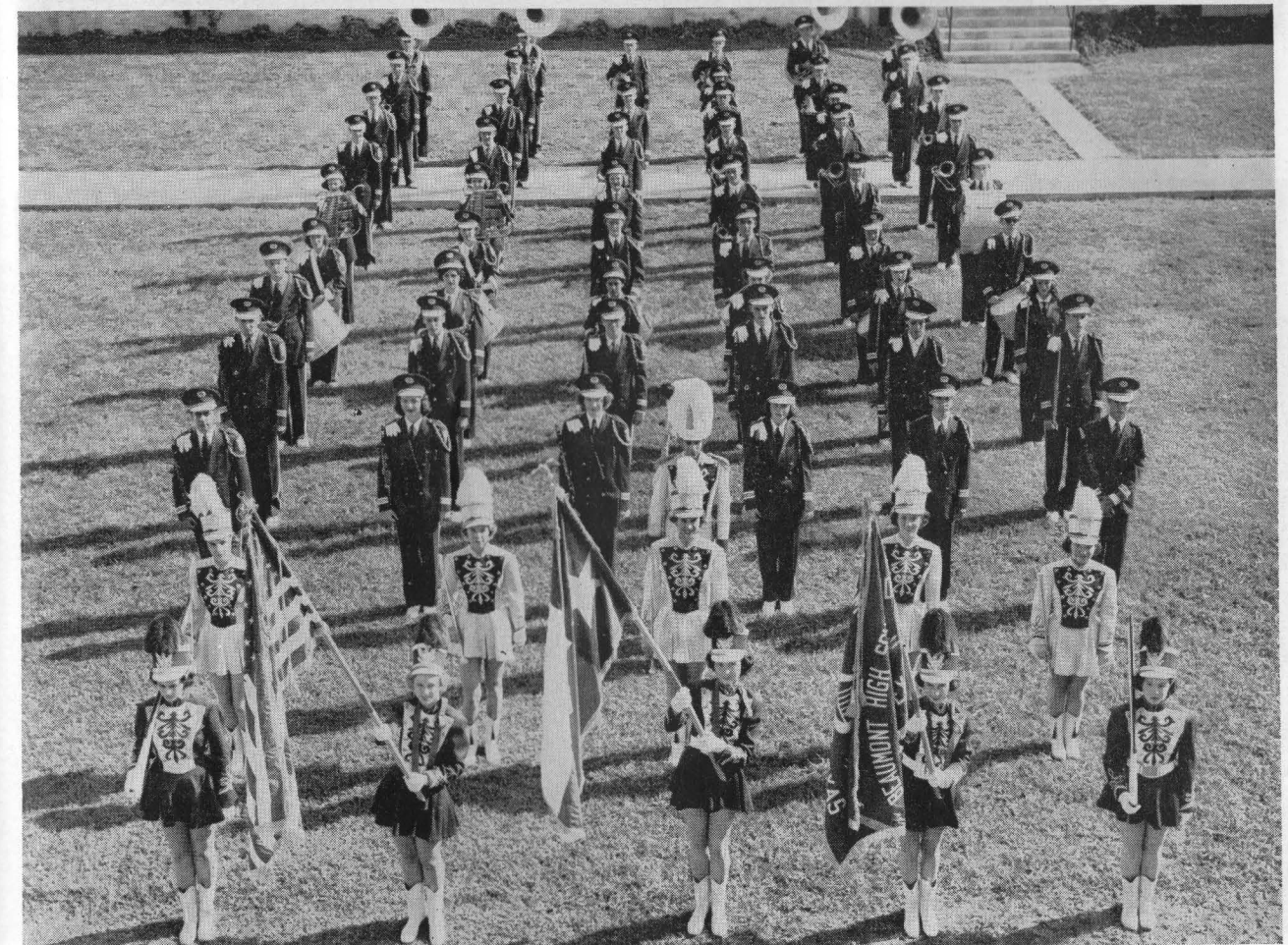
## HALF-TIME STARS



KILGORE COLLEGE RANGER BAND

MAJOR H. L. WALKER, Director

Kilgore, Texas

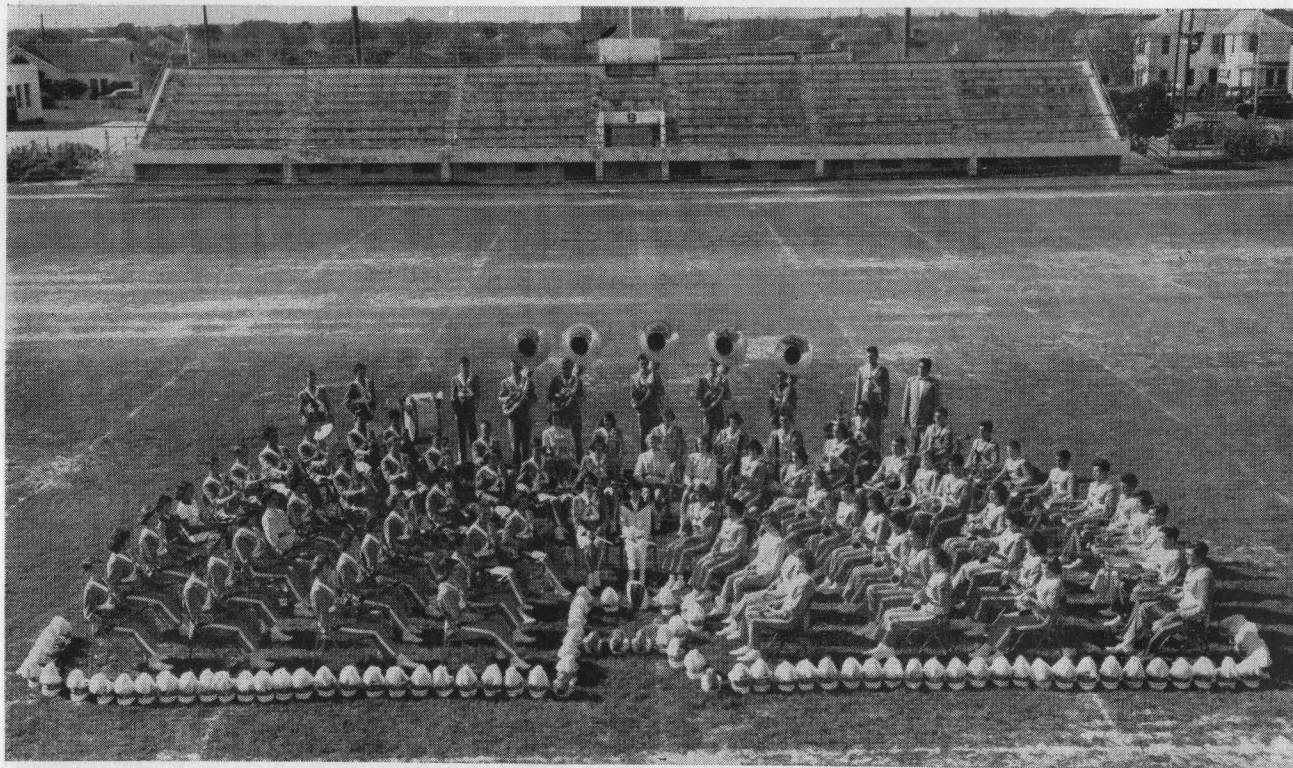


BEAUMONT HIGH SCHOOL BAND

ARNOLD WHEDBEE, Director

Beaumont, Texas

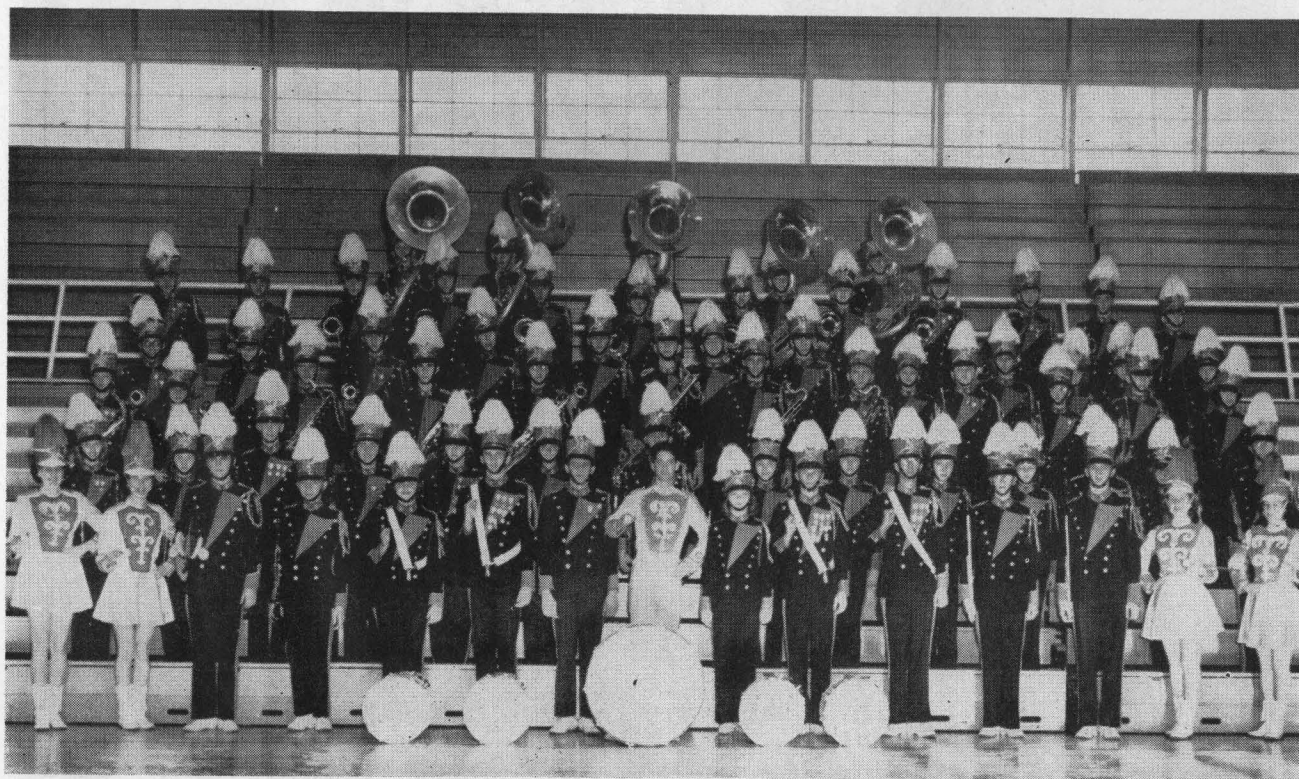
## HALF-TIME STARS



REFUGIO HIGH SCHOOL BAND

TOMMY WILLIAMSON, Director

Refugio, Texas

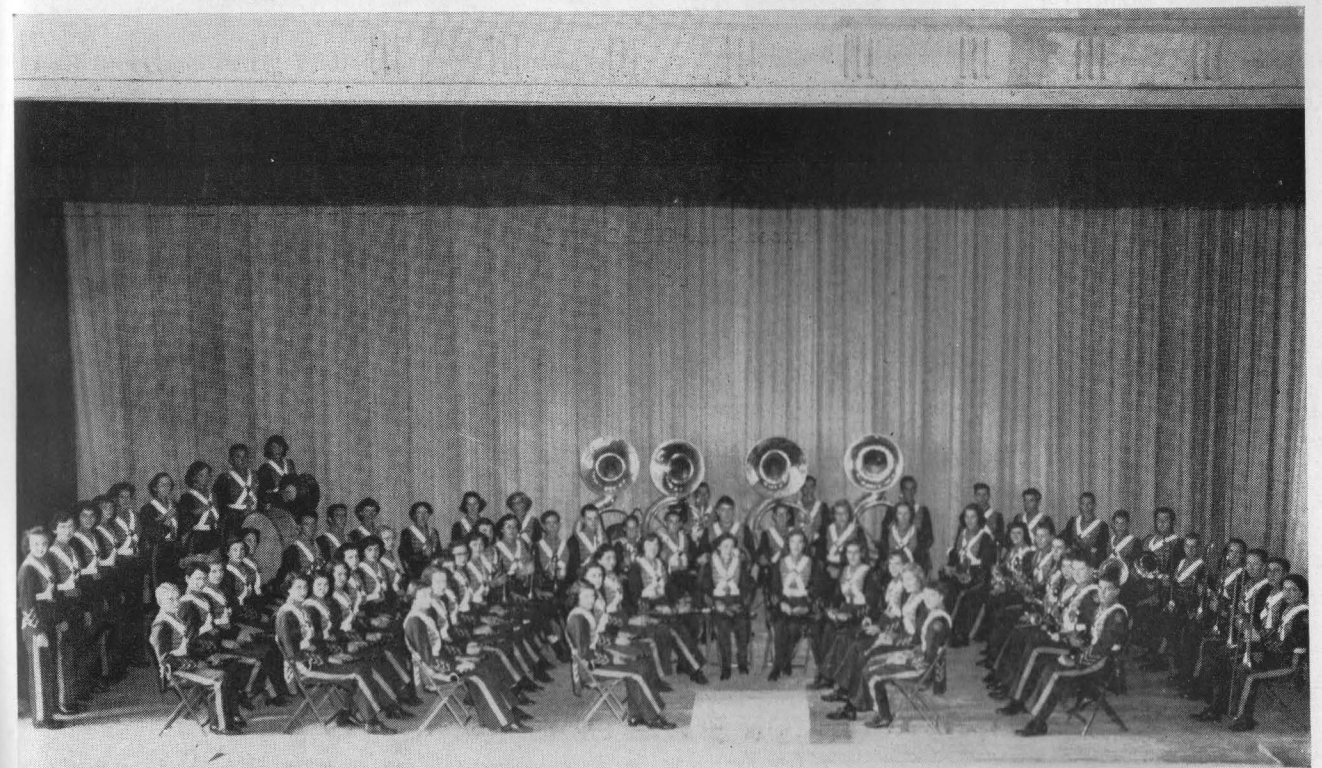


TEXARKANA HIGH SCHOOL BAND

JESS PETTEY, Director

Texarkana, Texas

## HALF-TIME STARS



CENTER HIGH SCHOOL BAND

CARROLL COLVERT, Director

Center, Texas



KERMIT HIGH SCHOOL BAND

G. T. GILLIGAN, Director

Kermit, Texas

COTTON BOWL STATISTICAL RECORDS

Most Points Scored: (40) Texas in 1946 game.	Best Punting Average (68.7 yards average) SMU in 1949 game.
Most Points Scored in One Quarter: (21) Rice in 1938 game; second quarter.	Most Yards Penalized: (90) Boston College in 1940 game.
Most First Downs: (22) Missouri in 1946 game.	Most Passes Intercepted: (7) Alabama in 1942 game.
Most Passes Completed: (14) Texas A&M in 1942 game.	Least First Downs: (1) Alabama in 1942 game and Arkansas in 1947 game.
Most Passes Attempted: (41) Texas A&M in 1942 game.	Least Yards Gained Rushing: (—14) Tennessee in 1953 game.
Most Yards Gained on Passes: (234) Texas in 1946 game.	Least Yards Passing: (0) Arkansas in 1947 game.
Highest Percentage Pass Completions: (13 of 14 for .928 average) Texas in 1946 game.	Least Number Passes Completed: (0) Arkansas in 1947 game.
Most Yards from Scrimmage: (408) Missouri in 1946 game.	Least Yards Penalized: (0) Texas in 1944 game.
Most Net Yards Gained: (514) Missouri in 1946 game.	

COTTON BOWL CLASSICS

1937—TCU .....16	Marquette ..... 6	1946—Texas U. ....40	Missouri U. ....27
1938—Rice .....28	Colorado U. ....14	1947—Arkansas ..... 0	LSU ..... 0
1939—St. Marys (Cal.)..20	Texas Tech .....13	1948—SMU .....13	Penn State .....13
1940—Clemson ..... 6	Boston College ..... 3	1949—SMU .....21	Oregon U. ....13
1941—Texas A&M .....13	Fordham .....12	1950—Rice .....27	North Carolina U..13
1942—Alabama U. ....29	Texas A&M .....21	1951—Tennessee U. ....20	Texas U. ....14
1943—Texas U. ....14	Georgia Tech ..... 7	1952—TCU ..... 7	Kentucky .....20
1944—Randolph Field... 7	Texas U. .... 7	1953—Texas .....16	Tennessee ..... 0
1945—Oklahoma A&M..34	TCU ..... 0		

RED DREW OF ALABAMA  
(Continued from Page 17)

He was the first major college coach in the country (1949) to teach two styles of attack, the Notre Dame box he knew so well, and the Split-T he learned from such friends as Don Faurot, Bud Wilkinson and Jim Tatum.

This year the Tide used mainly Split-T stuff. Don't be surprised today, however, to see the Alabama backs occasionally go into a pretty dance and into the Rockne (or Thomas) box formation.

Drew faced a major rebuilding job last September, having to groom an entire offensive line except for one tackle, Jack Smalley. This team has been one of Drew's better coaching jobs.

This might not be as powerful a Tide as the edition which toyed with Syracuse—but this isn't a weakling, either.

Drew doesn't coach boys. They might come to him as lads but if they qualify for his assignments . . . they're men folks from that hour on.

THE RICE INSTITUTE  
(Continued from Page 33)

rection of Dr. T. W. Bonner of the Rice faculty, who is recognized as one of the world's foremost atomic physicists.

With its exceptional academic standing, splendid faculty, and fine physical plant, The Rice Institute should continue through the years as one of America's finest schools of higher learning.

THE COTTON BOWL STORY  
(Continued from Page 11)

in the game's receipts, although naturally the host team gets the biggest slice.

And the \$150,000 which go to Alabama's Crimson Tide as the guest team is a far cry from the \$10,000 Marquette took back home in 1937. Rice, as the host team, will come in for something like \$70,000, and every school in the Southwest Conference will enjoy a take as big as the \$10,000 Texas Christian University received as a guarantee in 1937.

Instead of a sparsely-filled stadium, such as watched the initial Cotton Bowl game, today's contest is being played before 75,504 fans, and thousands more would be on hand if tickets were available. Weeks in advance, the Cotton Bowl Classic is a sellout, and it has been for years.

So the Cotton Bowl, the youngest of the four major New Year's Day classics, has reached maturity—full maturity.

No attraction can boast any greater array of football talent than has graced the gridiron in the Cotton Bowl. Teams from the East, West, North and South have displayed their wares in this classic, which celebrates its eighteenth year today. St. Mary's, Clemson, Fordham, Alabama, Georgia Tech, Oregon, Tennessee, Missouri, Kentucky, Penn State, North Carolina—just a few of the great elevens that have competed here.

And the competition has been keen, twelve of the seventeen games played being decided by less than two touchdowns. On five occasions,

there was but three points or less difference in the final scores. Only once has there been what might be classed as a one-sided contest in the Cotton Bowl. That was in 1945 when Oklahoma's Aggies blasted Texas Christian University out of the stadium by a 34 to 0 count. The next widest margin of victory was last year, when Texas trimmed Tennessee 16 to 0.

Of the six Southwest Conference clubs that have served as host team in the Cotton Bowl (Baylor is the only team that has not made an appearance) Rice's Owls boast the only undefeated, untied record. In their two appearances the Owls turned back Colorado and North Carolina. Southern Methodist, twice the host team, has never suffered a loss, winning from Oregon and tying Penn State. Texas' Longhorns have played host most frequently, last year's classic marking their fifth as representatives of the Southwest Conference. Oddly enough Texas Christian University, the first host team, and victorious in that contest, is the only SWC school that has been bested twice in the classic. The Frogs were dumped by Oklahoma A&M in the classic's most one-sided melee, and were decisioned by Kentucky in the 1952 game.

Overall the Southwest Conference has a record in the Cotton Bowl games of which it may be justly proud—eight victories against four defeats with three ties. (Two games, in 1939 and 1940, did not involve SWC team). And the Southwest Conference has a bowl game that is a credit, not only to Dallas and Texas, but the entire nation.

IT'S THE "KICK" YOU GET FROM THE  
DELICIOUS FOODS AT



RESTAURANTS

THAT MAKE THEM ALL-TIME FAVORITES

- SAMMY'S 5311 INWOOD PLAZA
- SAMMY'S, 3900 OAK LAWN AVENUE
- SAMMY'S, 1516 GREENVILLE
- SAMMY, JR., 1639 FOREST AVENUE
- SAMMY'S, 1601 GREENVILLE

ALABAMA 1953 INDIVIDUAL STATISTICS

INDIVIDUAL RUSHING					
	Runs	Gain	Loss	Net	Ave.
Tharp	111	634	27	607	5.5
Stone	73	348	12	336	4.5
Luna	80	344	35	309	3.9
Lewis	60	246	2	244	4.1
Elmore	43	195	33	162	3.8
Oliver	41	179	27	152	3.7
Ingram	41	152	18	134	3.2
McBride	5	35	6	29	5.8
Carrigan	6	24	0	24	4.0
Malcolm	7	24	0	24	3.5
Sarr	35	85	66	19	0.54
Hill	2	9	3	6	3.0
Watford	1	2	0	2	2.0
Monnett	1	0	0	0	0.0
Hollis	2	0	2	-2	-1.0
Totals	508	2277	231	2046	4.3

INDIVIDUAL PASSING						
	Att.	Comp.	Int.	Gain	TD	Pct.
Sarr	119	59	6	870	8	49.6
Elmore	17	4	1	32	0	23.5
Ingram	3	1	1	13	0	33.3
Luna	4	0	0	0	0	00.0
Totals	143	64	8	915	8	44.7

INDIVIDUAL RECEIVING			
	Caught	Yards	TDs
Willis	11	191	2
Tharp	11	129	1
Luna	9	116	1
Oliver	8	200	1
Lynch	8	83	1
Cummings	6	114	2
Lewis	3	38	0
Ingram	2	18	0
Malcolm	3	17	0
Stone	2	3	0
McBride	1	6	0
Total	64	915	8

INDIVIDUAL PUNTING			
	No.	Yards	Ave.
Sarr	30	1241	41.4
Luna	29	999	34.5
Stone	3	125	41.7
Ingram	2	80	40.0
Elmore	4	117	29.3
Totals	68	2562	37.7

PASS INTERCEPTIONS				
	No.	Yds.	Ret.	TDs
Luna	6	158	1	
Stone	4	46	0	
DeLaurentis	3	41	1	
Sarr	2	17	0	
Carrigan	1	13	0	
McBride	1	0	0	
Willis	1	0	0	
Oliver	1	0	0	
Totals	19	275	2	

PUNT RETURNS			
	No.	Yards	Ave.
Tharp	5	150	30.0
Luna	8	100	12.5
Ingram	12	90	7.5
McBride	3	31	10.3
Sarr	2	12	6.0
Watford	1	8	8.0
Cummings	1	3	3.0
Totals	32	394	12.3

KICKOFF RETURNS			
	No.	Yards	Ave.
Luna	10	193	19.3
Oliver	3	68	22.7
Lewis	3	51	17.0
Tharp	2	49	24.5
Elmore	1	19	19.0
Cummings	1	16	16.0
Stone	1	7	7.0
Hollis	1	0	0.0
Totals	22	403	18.3

SCORING					
	TDs	EPA	EPM	FG	Total
Luna	3	17	13	1	34
Tharp	5	—	0	0	30
Oliver	4	0	0	0	24
Elmore	2	2	1	0	13
Willis	2	0	0	0	12
Lewis	2	0	0	0	12
Cummings	2	0	0	0	12
Stone	2	0	0	0	12
Ingram	1	5	4	0	10
Lynch	1	0	0	9	6
DeLaurentis	1	0	0	0	6
Sington	0	1	1	0	1
Totals	25	25	19	1	172

ALABAMA PLAYERS RECOVERING OPPONENT FUMBLES:  
Mason 5, Eckerly 2, Smalley 1, Davis 1, Hollis 1, Carrigan 1, Sarr 1, Lee 1.  
Total 13.

RICE 1953 INDIVIDUAL STATISTICS

RUSHING			
Player—	Carries	Net Yds.	Avg.
D. Johnson	187	944	5.1
Moegle	114	833	7.3
Taylor	29	211	7.3
Nesrsta	32	174	5.4
Kellogg	36	165	4.6
Stone	16	138	8.6
Garbrecht	22	114	5.2
C. Johnson	24	76	3.2
Laviage	9	57	6.3
Rogers	4	19	4.8
Burk	15	17	1.1
Gaskamp	5	12	2.4
Whittaker	3	5	1.7
Proctor	12	2	—
Grantham	5	-6	—
Fenstemaker	25	-15	—

PASSING				
Player—	Att.	Compl.	Int.	Yds.
Fenstemaker	58	21	3	328
Nisbet	29	18	2	295
Grantham	29	13	1	176
Proctor	14	4	1	43
Moegle	3	1	1	9
D. Johnson	1	0	1	0

PASS RECEIVING				
Player—	Caught	Yds.	Avg.	TD's
Hart	15	239	15.9	1
Crawford	10	178	17.8	2
Bridges	9	149	16.6	2
D. Johnson	6	129	21.5	0
Nesrsta	3	31	10.3	0
C. Johnson	2	31	15.6	0
Ward	3	27	9.0	0
Moegle	5	26	5.2	0
Burk	2	23	11.5	0
Kellogg	2	18	9.0	0

PUNTING			
Player—	No.	Yds.	Avg.
D. Johnson	41	1405	34.3
Nisbet	6	201	33.5
Moegle	3	118	39.3
Stone	3	107	35.7
Burk	1	43	43.0
Holland	1	36	34.0

PUNT RETURNS			
Player—	No.	Yds.	Avg.
Moegle	17	194	11.4
Nesrsta	4	42	10.5
D. Johnson	1	19	19.0
Fenstemaker	1	14	14.0
C. Johnson	2	14	7.0

KICKOFF RETURNS			
Player—	No.	Yds.	Avg.
D. Johnson	8	224	28.0
Kellogg	3	48	16.0
Moegle	3	41	13.7
Burk	1	22	22.0
Nesrsta	1	22	22.0
Fenstemaker	2	21	10.5
Bridges	2	18	9.0
Stone	1	16	16.0
Proctor	1	14	14.0
Crawford	1	14	14.0
Wortham	1	12	12.0
C. Johnson	1	11	11.0
Grantham	1	10	10.0
Hart	1	3	3.0
Paul	1	2	2.0

INTERCEPTIONS		
Player—	No.	Yds.
Nisbet	4	94
Rucka	3	14
Moegle	3	68
Kellogg	2	24
Fenstemaker	2	27
D. Johnson	1	10
C. Johnson	1	36
Taylor	1	35
Wilson	1	4
Grantham	1	4
Gaskamp	1	1
Rogers	1	1
Stone	1	0
Nesrsta	1	18
Hudson	1	15

SCORING			
Player—	TD	EP	TP
D. Johnson	10	2	62
Moegle	10	1	61
Fenstemaker	2	21 of 26	33
Nesrsta	4	1	25
Bridges	3	0	18
Kellogg	2	0	12
Crawford	2	0	12
Stone	1	0	6
Hart	1	0	6
Nisbet	1	0	6
Laviage	1	0	6
Garbrecht	1	0	6
Rucka	1	0	6
Costa	0	2	2
Burk	0	2	2

# THE OWLS FROM RICE

(Continued from Page 25)

career, are other starting senior linemen, while Buddy Grantham, another Grand Prairie boy whose career also was limited by early injuries, and Fenstemaker are seniors alternating at quarterbacks.

Fenstemaker righted the Owls for the stretch run in 1952, while Grantham moved in with the Arkansas game for a major role in the terrific finish by Rice in 1953.

Younger talent, although scarce on the Number One team, had an important role in 1953.

Dickie Moegle, speedy little left halfback from Taylor, finished second only to Kosse Johnson in yardage gained with a total of 866, topped by a phenomenal day against Baylor when he gained 140 yards rushing, including an 81-yard touch-down surge, scored two touchdowns and had three pass interceptions. Moegle also finished second to Kosse in scoring by a point.

A fiercely-determined junior fit right into the "Up-end Kid" picture in the line. He is Kenny Paul of Houston, a guard who made many All-conference teams and put on an almost unforgettable performance against Arkansas.

Still another junior is Gordon Kellogg, a Baytown boy who was a first team defensive halfback in 1952 and made the 1953 team by running opponents' offensive plays so well he couldn't be denied. His arrival to replace the injured Morris Stone at right halfback had much to do with the Rice's overall efficiency late in the season.

A sophomore starter in several games was Marshall Crawford, end from Lamesa whose play indicates greatness in the future.

Although he wasn't a starter, no story about the

1953 Rice team would be complete without a paragraph on Nesrsta, who was nicknamed "Necessity" in two platoon days and was just about as valuable in 1953's limited substitution. The 5-foot, 9-inch San Antonian, down as low as 137 pounds at one stage of 1953, didn't let the return of one platoon football stand in the way of valuable service at offensive halfback, let alone his defensive ability.

Nesrsta was the nation's leading punt returner in 1952.

Another sophomore had a major role in this 1953 Rice team. He was John (Pinky) Nisbet of Houston, who shared the quarter-backing duties with Grantham and Fenstemaker.

There's an all to brief try at describing the young fellows who made this 1953 Rice team. There's a story in every one of them, but the seniors obviously take precedence.

Besides those seniors dwelled on above, Treadway is a valuable guard, as is LaMar (Skip) Lee. Carl Johnson is a talented halfback, limited by injuries in his final season. So was Sammy Ward, an end. Don Whittaker, only Dallas boy on the Rice squad, is a qualified member of "The Up-End Kids."

Bob Garbrecht, hard-running reserve fullback, is the only out-of-state member of the Rice squad. Bob is from New York City, and the only game his parents saw him play was when the Owls beat Cornell in Ithaca, N. Y. Bob had a fine day against Cornell, and when the Rice plane left New York, he told his parents, "See you in the Cotton Bowl."

He called the turn.

The Official Watch for Timing Today's Game is Longines—"The World's Most Honored Watch"

# Arthur's

*Nationally famous for fine foods*

★ 3701 McKinney Ave.

★ Dial LA-9346

UNDER THE PERSONAL SUPERVISION OF ARTHUR BATES



*Wake*

*Up*

*your*

*Taste*



**DRINK**

***Dr. Pepper***